

# Introduction to Asphalt Materials, Manufacture, and Modification



---

Workshop Conducted by  
Arizona Pavements & Materials Conference  
Phoenix, AZ  
10 April 2014

Robert B. McGennis, P.E.  
Technical Manager - Asphalt  
HollyFrontier Refining & Marketing LLC



# My Goals for the Next Hour



- Have you understand the basics of how asphalt is manufactured
- Review the different types of asphalt materials and specifications
- Introduce the topic of asphalt modification (set up other speakers)
- Not be boring and have fun!!!

# Where Does Asphalt Come From?

*(From a refinery manager's POV)*

---

## Petroleum Refining -

Process by which crude petroleum is distilled to produce a wide variety of transportation motor fuels and petrochemical products leaving behind a bunch of black gooey stuff that we don't like.





# Where Does Asphalt Come From?

*(From an asphalt guy's POV...Paul, Bill, Bob, Jeff, Mo, Julie, etc.)*

---

## Petroleum Refining -

Process by which impurities are removed from crude oil to produce asphalt.



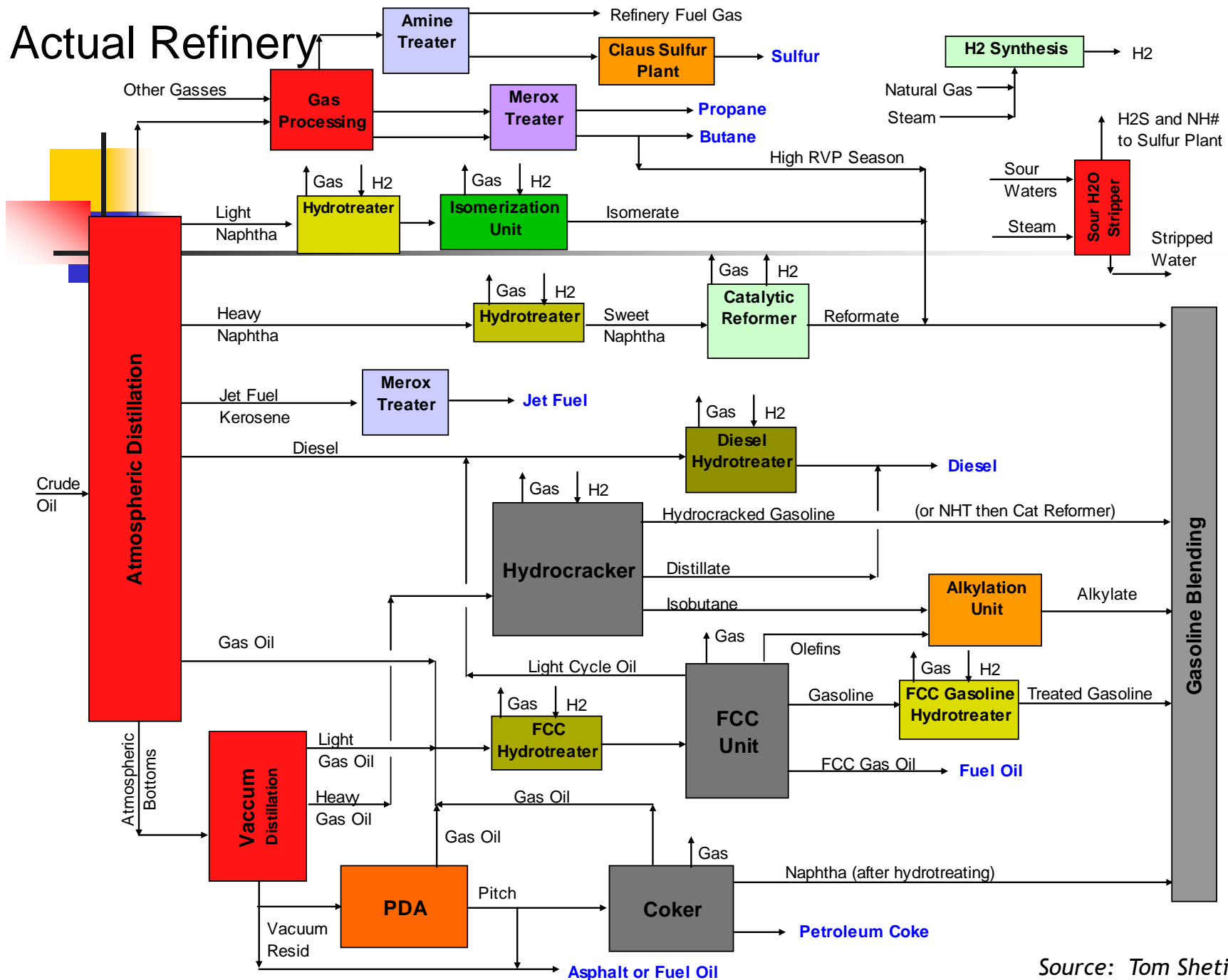
Source: Marshall Shackelford

# World Wide Refining

- There are ~650 Refineries World Wide
- About 150 of them are in the United States (there used to be 300+)
- The largest in the world is the Reliance Refining Complex, Jamnigar, India @ 1,240,000 BPD crude capacity
- The largest in the U.S. is Exxon Baytown, TX @ 572,500 BPD
- No refineries in Arizona!

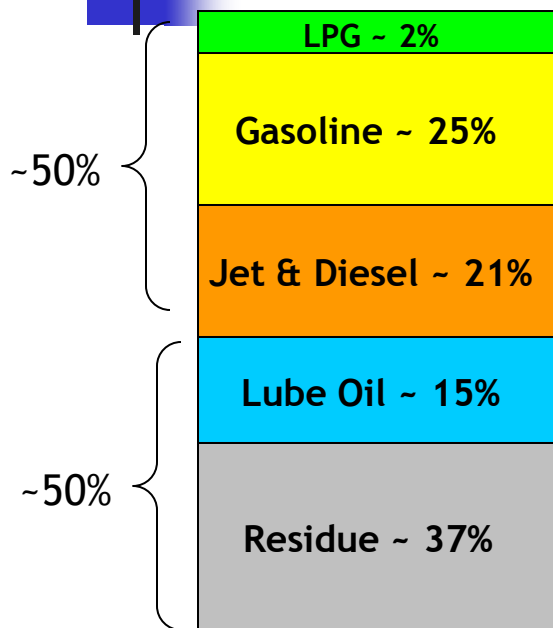


# Actual Refinery




Source: Tom Shetina, HFRM

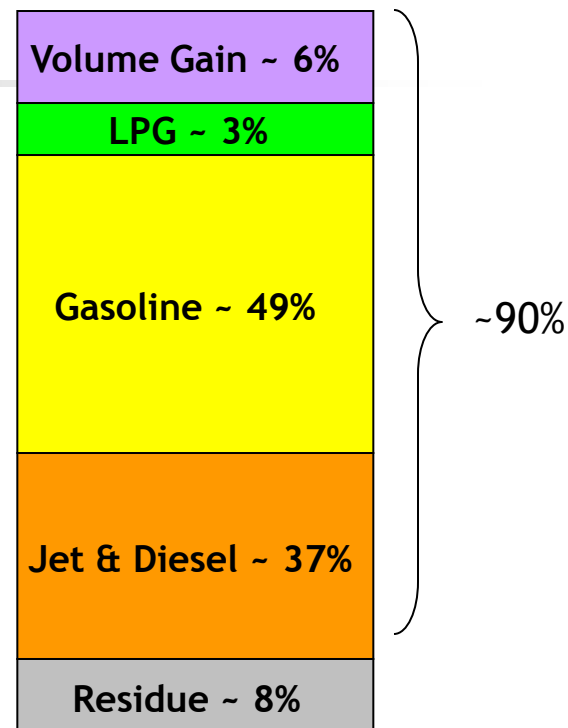
This is what  
crude oil alone  
gives you...



**Distilled WTI Crude**

  
**The Refining Barrel  
42 Gallons**

...this is  
what the  
market demands!

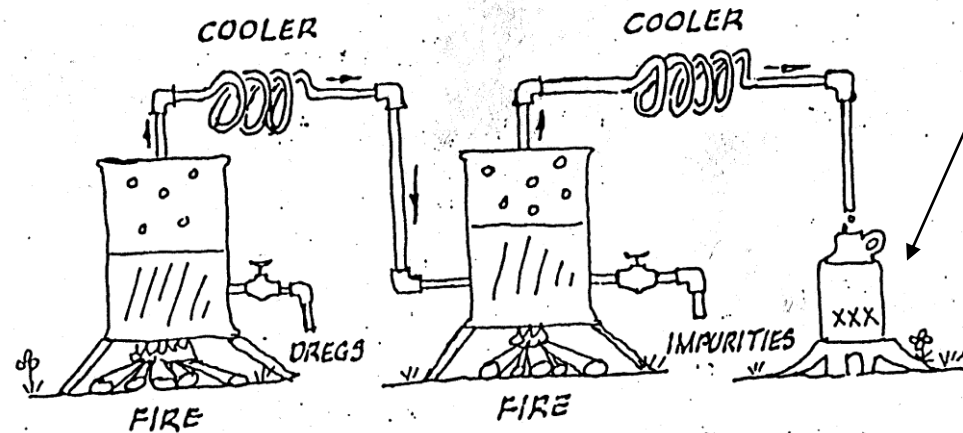


**Refined WTI Crude**



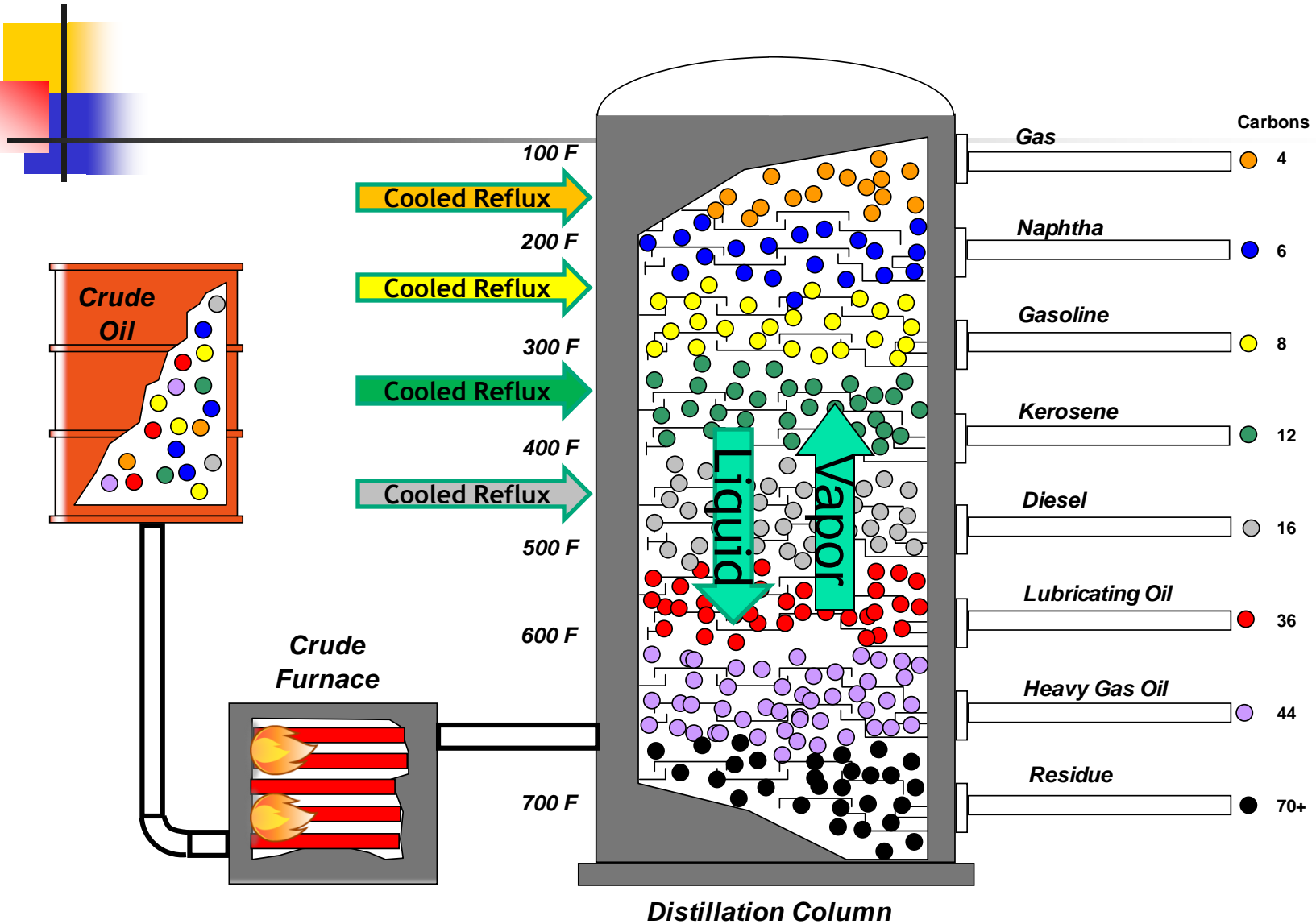
# An Example of Distillation

The Good Stuff!



BATCH DISTILLATION

# Fractional Distillation Column

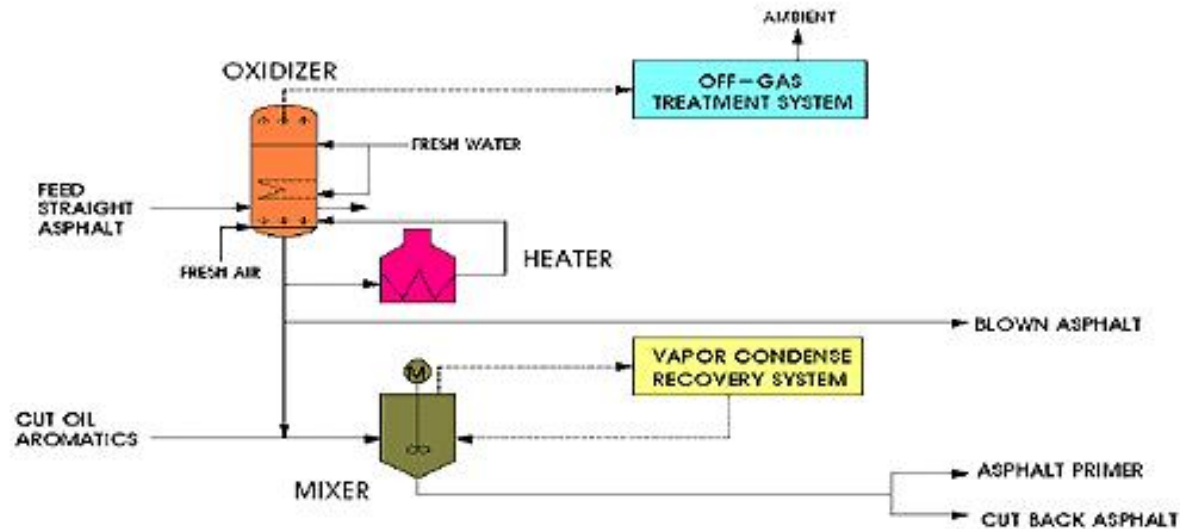


Source: Tom Shetina, HFRM

# Asphalt Oxidizer

- Purpose

- Via air blowing, chemically change asphalt to produce harder, less temperature susceptible asphalt
- Most roofing asphalt comes from this
- In N. America, a little bit of paving asphalt comes from this



# Refinery Products



- Gasoline - automobile, light truck, small engine fuel
- Diesel - automobile, heavy trucks, trains, heavy equipment
- Jet Fuel- Commercial and military aircraft
- Kerosene - Home heating, charcoal fluid
- Liquified Petroleum Gas (LPG) - Chemical feed, heating, commercial applications
- Fuel Oil - Ships, boilers, furnaces
- **Asphalt** - Roads, roofing material, sealants
- Carbon Black Oil - Carbon black manufacture, carbon composites, tires
- Lubricating Oil - Engine & machinery lubrication
- Waxes - Candles, industrial sealants
- Petroleum Coke - Coal fired boilers, metals manufacture (anodes, fuel)
- Sulfur - Chemical and fertilizer manufacture



# Types of Asphalt

---

- Paving Asphalt for Building Roads
  - Asphalt Cement
  - Cutback Asphalt
  - Emulsified Asphalt
- Roofing Asphalt
- Specialty Asphalt



# Specialty Asphalt Products

- Pruning paint
- Sealants
- Grease component
- Waterproofing membranes
- Clay pigeons
- Electrodes
- Many others...





# Roofing Asphalt

- ASTM D312 - built up roofs
- ASTM D449 - dampproofing and waterproofing
- ASTM D225 - asphalt shingles
- ASTM D6380 - organic felt asphalt roll roofing
- many others...



# Types of Asphalt for Building Roads

- Asphalt Cement
- Cutback Asphalt
- Emulsified Asphalt



# Asphalt Cements for Paving in Arizona

- No refineries here, so...
- Terminal supplied in AZ
  - Paramount
  - Valero
  - Ergon
  - Western Refining
  - HollyFrontier
- Produced to meet paving spec
  - PG specs in Arizona and most other places in US
  - PG variants (aka PG Plus)



*Gotta have heat*

# Cutback Asphalts

- Diminished presence in AZ market and elsewhere
- Rapid Cure (RC)
  - high volatility solvent (e.g., naphtha)
  - chip seals, tack coat
- Medium curing (MC) - ADOT grades
  - moderate volatility (e.g., kerosene)
  - patching mix or prime coat
- Slow Curing (SC)
  - low volatility (diesel or something else)
  - patching mix



*Gotta have solvent*

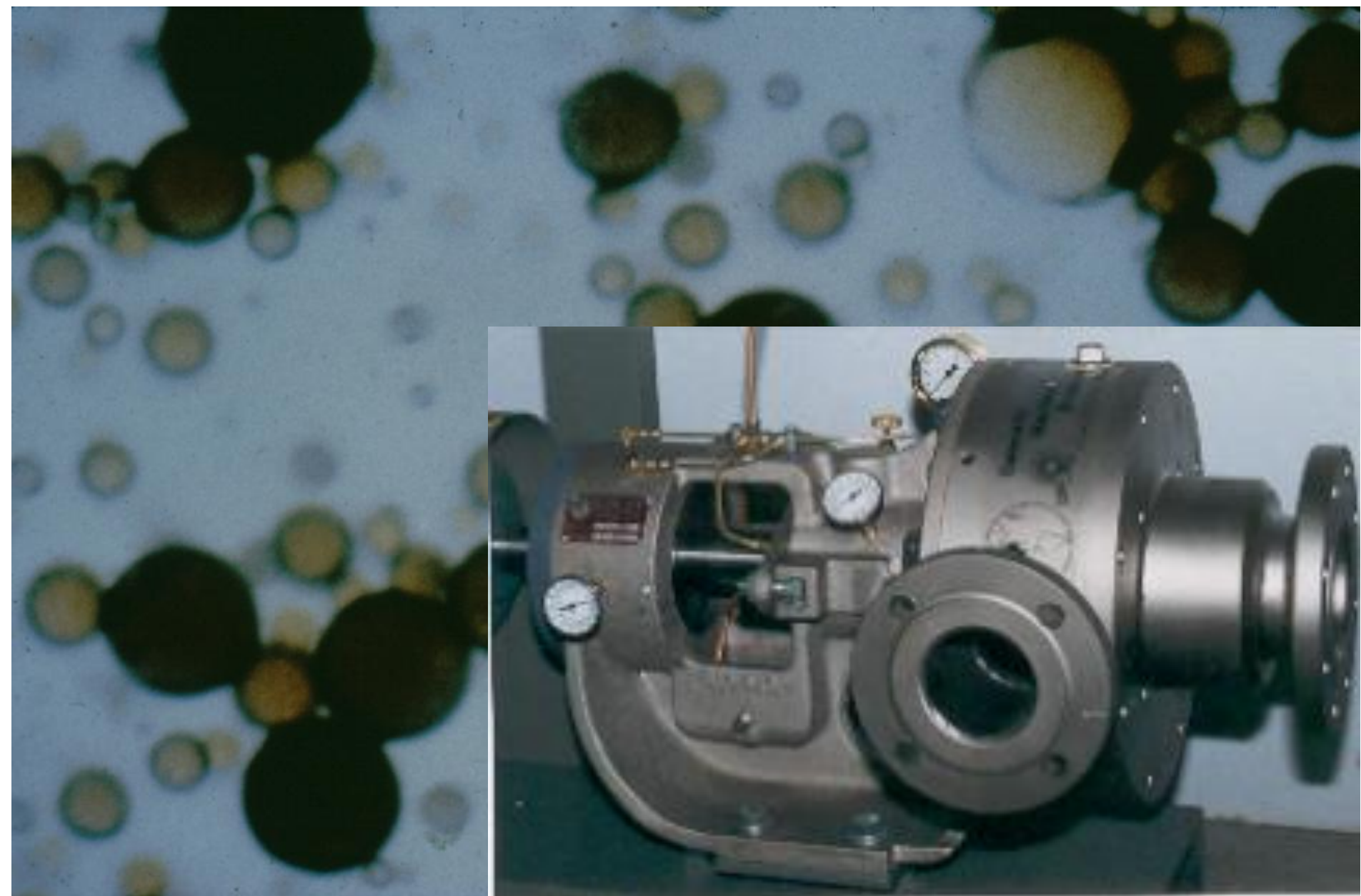
# Emulsified Asphalt

- Made fluid by suspending droplets in water with and emulsifying agent
  - agent imparts charge to droplets
  - this is way cool!
- Cationic (CRS, CSS, etc.)
  - positive charge on droplets
  - work good with gravels (sort of)
- Anionic (RS, SS, HF, etc.)
  - negative charge on droplets
  - work good with limestone (sort of)

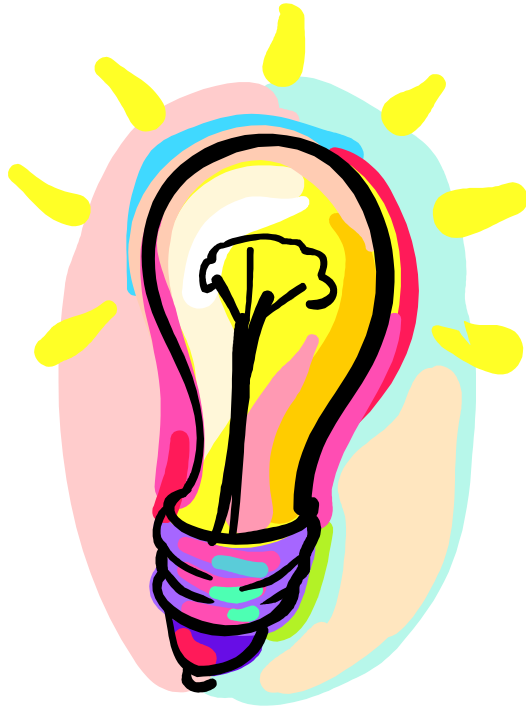
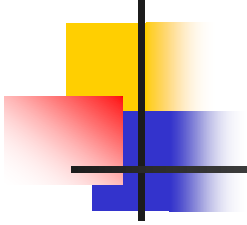
*Gotta have water  
and soap*











Let's talk  
about  
specifications!

# So you want to buy some asphalt...

---

- Tell me what you want
  - “I want it sticky”
  - “it needs to remain pliable if I chew it 100 times”
  - “if I heat it to 100 F in an oven in an itty bitty cup, it *shall* not flow out after one hour  $\pm$  5 minutes”
  - sell me something that works



# You Need a Specification!

---

- Tells important properties
- Identifies ways to measure important properties
- Important part of a contract between a buyer and seller



# Specifications

Where do they come from?



AASHTO

ASTM

DOTs (ADOT for example)

MAG

City of Phoenix, Glendale,  
Mesa, etc.

Material vs. Construction  
Specs

# Past Asphalt Specifications



## “AC” Specification

AC-5  
AC-10  
AC-20  
AC-30  
AC-40

## “Pen” Specification

40 - 50  
60 - 70  
85 - 100  
120 - 150  
200 - 300





# *...and then there was PG*

*(It's a new thing! 1993 to present)*

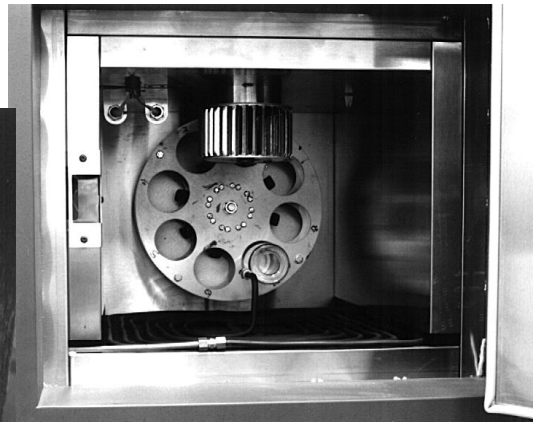
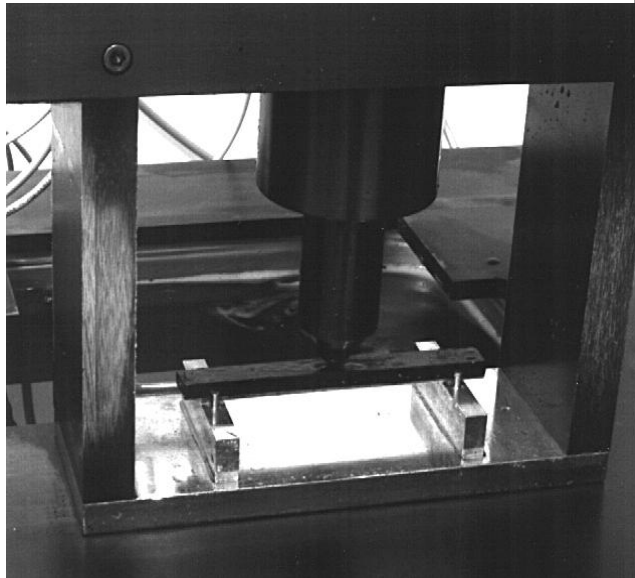
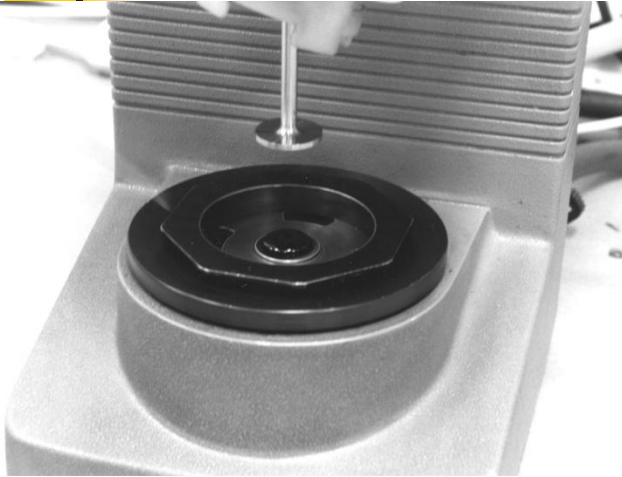
---

- Strategic Highway Research Program
  - 1987-1993
  - \$50 million research project by state DOTs
  - primarily at universities
- Product was called Superpave
  - Superior Performing Asphalt Pavements
  - PG binder spec with new tests
  - mix design system
- Adopted throughout (almost) all of US by now





# PG Tests



# What are the “PG” Grades All About?

## PG 70-10

Means Performance  
Graded Asphalt  
Binder





# What's this “PG” All About?

---

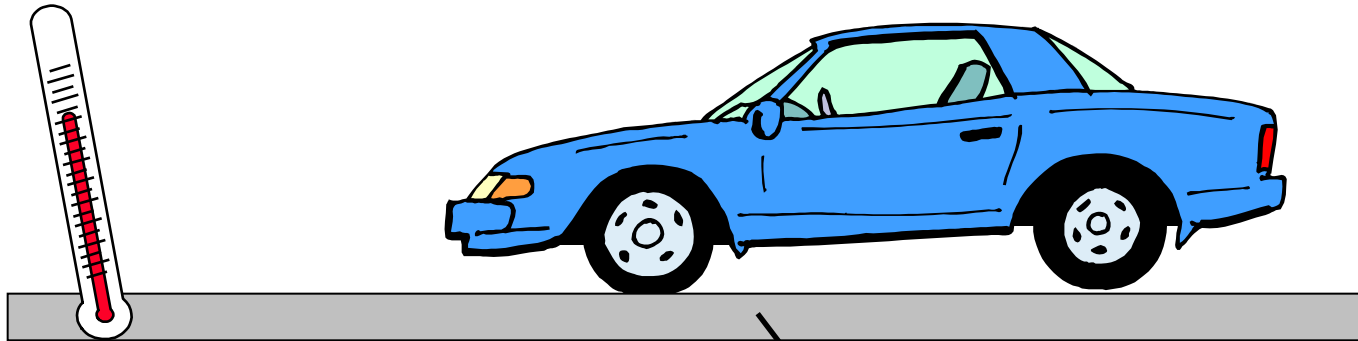
PG 70-10

High pavement temp (C)  
to protect against rutting

Low pavement temp (C)  
to protect against  
thermal cracking

# Another Way to Look at It

Test asphalt binder at temps  
this layer feels  
(high, intermediate, low)



Testing binder to get  
good performance for  
this layer at expected  
pavement temps.



# A look ahead question for you...which grade is better?

---

**PG 76-16** ← 92 deg temp spread

or

**PG 70-10** ← 80 deg temp spread

(Temperature spread > 90 means modifier probably needed.)

# Where exactly do you find the PG spec?

- AASHTO M320 - “Standard Specification for Performance-Graded Asphalt Binder”
  - ADOT Section 1005
  - MAG Section 711
  - ASTM D6373





# Takeaways so far

- Asphalt comes from refining of crude oil
  - process is called “fractional distillation”
  - one of many products produced in a petroleum refinery
  - no refineries in Arizona...thus terminal purchases
- There are three types of asphalts
  - paving, roofing, and specialty
- We buy and sell asphalt using a specification
  - “PG” asphalt spec is currently used in the US, including Arizona for paving asphalt





*Let's talk  
about  
modified  
asphalt  
binders!*

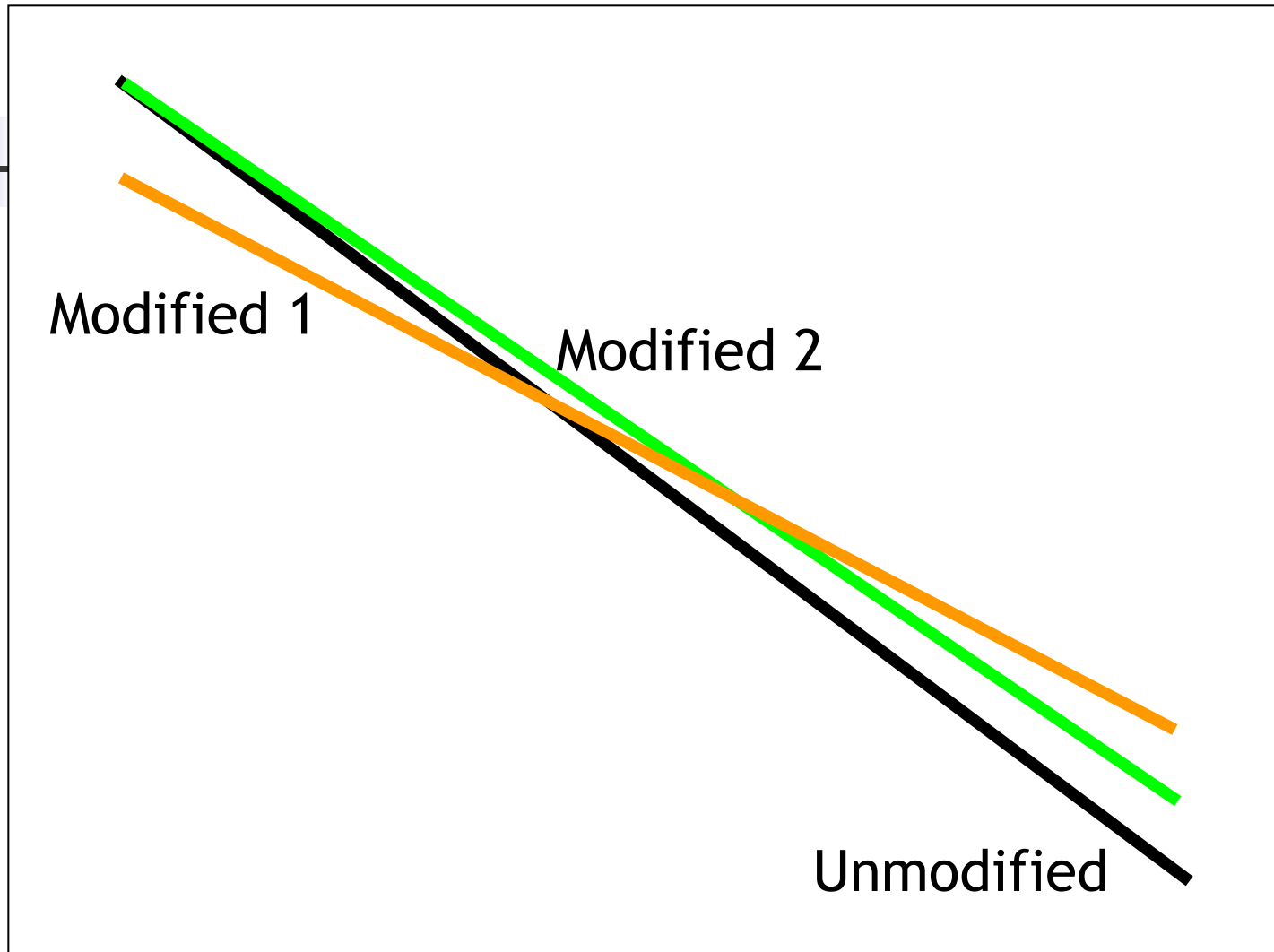


# Why Modified Binders?

---

- Extend the range of temperatures over which the asphalt binder will perform its intended function
  - rutting
  - cracking
- Longer lasting pavements
- *Cheaper pavements...in the long run!*

# Log Log Stiffness, Viscosity, etc.



Log Temperature



# Other Reasons

---



- Reduce moisture damage in mixes
- Stick chips better and faster
- Reduce pavement thickness
  - maybe/maybe not
- Address construction issues
  - drain off on open graded mixes
  - facilitate compaction
- Synergistic co-modifier effect
- Many other reasons...

# History of Modified Asphalts



- 1873 – Whiting patent in US, natural rubber
- 1930's - Test projects in Europe
- 1950's - Neoprene Latex in U.S. & Canada
- 1970's - Wide use of polymers in Europe
- 1980's – Polymer/rubber binders increase in U.S.
- 1990's - SHRP PG specs increase demand
- 1990's - chemical modification enters market
- 2000 - U.S. HMAC market - 15% Modified
- present - Estimated 25% Modified HMAC

# Modifier Selection Considerations

- Will it have the intended performance effect?
  - effect as stand alone modifier
  - effect as co-modifier
- Can it be specified?
- Does it meet purchase spec?
  - recipe vs performance vs both
- How much does it cost?
  - price volatility, availability, alternatives
- How must it be handled and incorporated?
- Does it stay homogeneous?
- Is it heat stable?
- Does it affect constructability?
- Are there testing considerations?





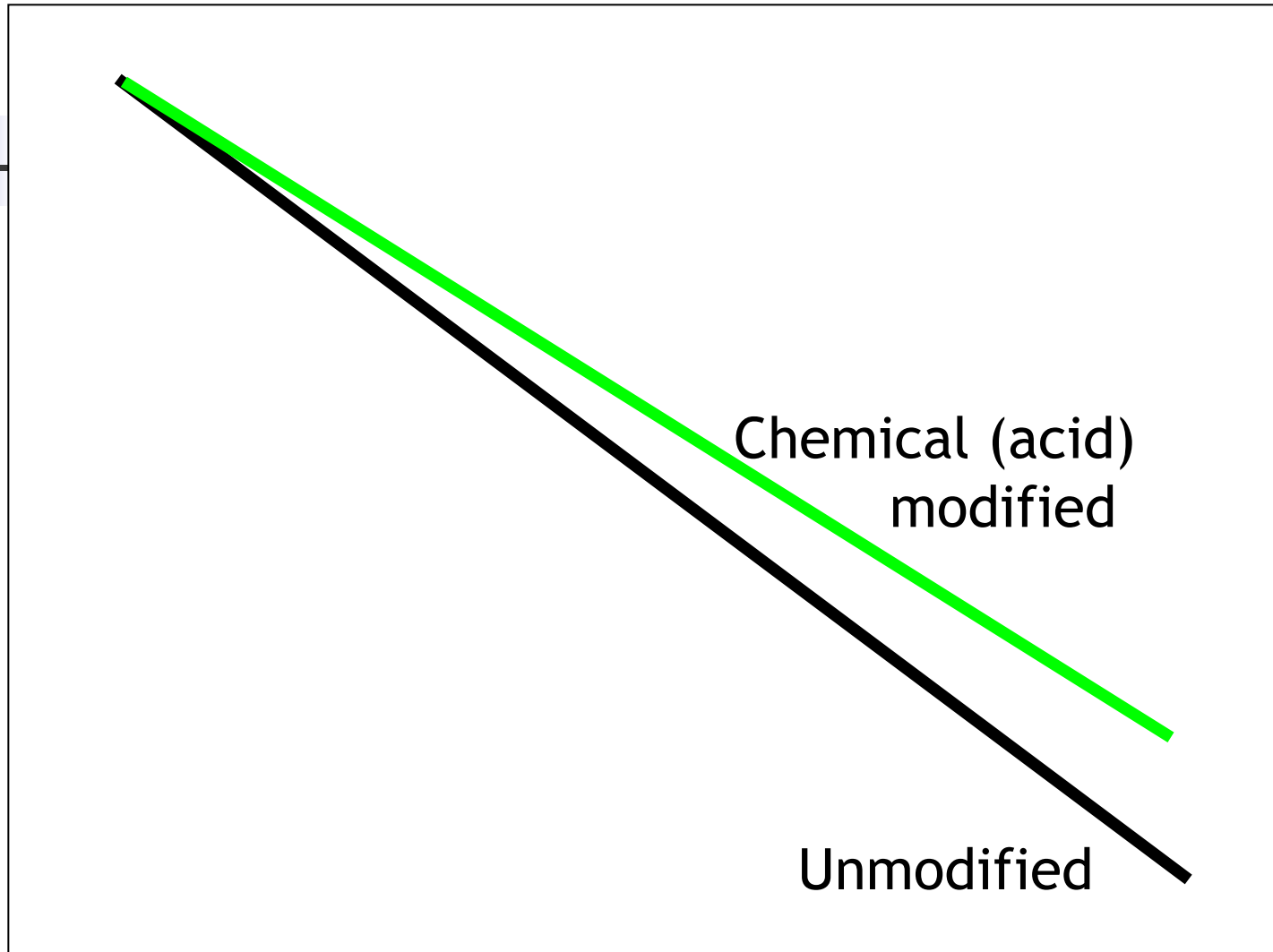
# Types of Modification

---



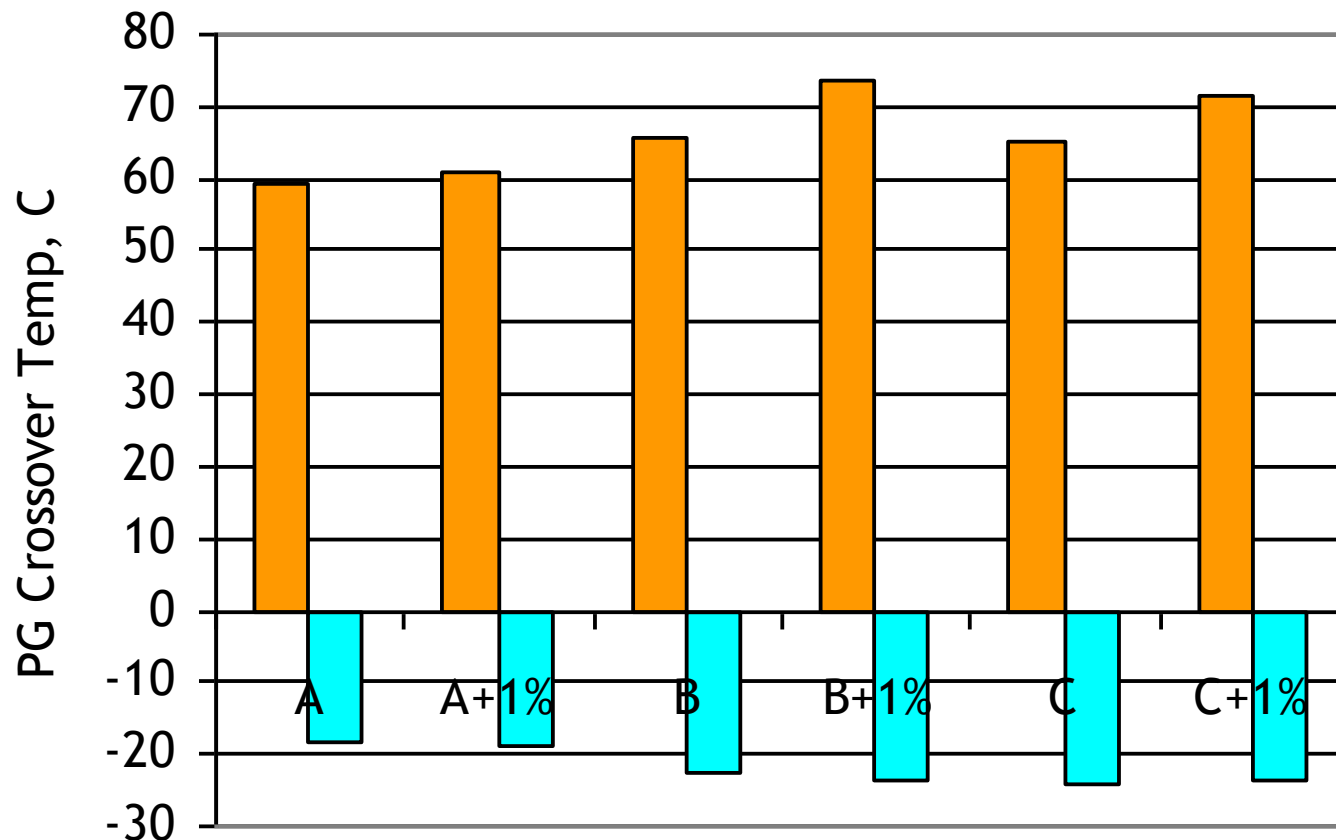
- Chemical modification
- Polymers and attendant stuff
- Modification by process (air blowing)
- Construction Enhancers
- Waste Products (e.g., crumb rubber)
- Fillers and Fibers
- Antistripping agents
- Hydrocarbons
- Antioxidants
- Extenders

# Log Log Stiffness, Viscosity, etc.

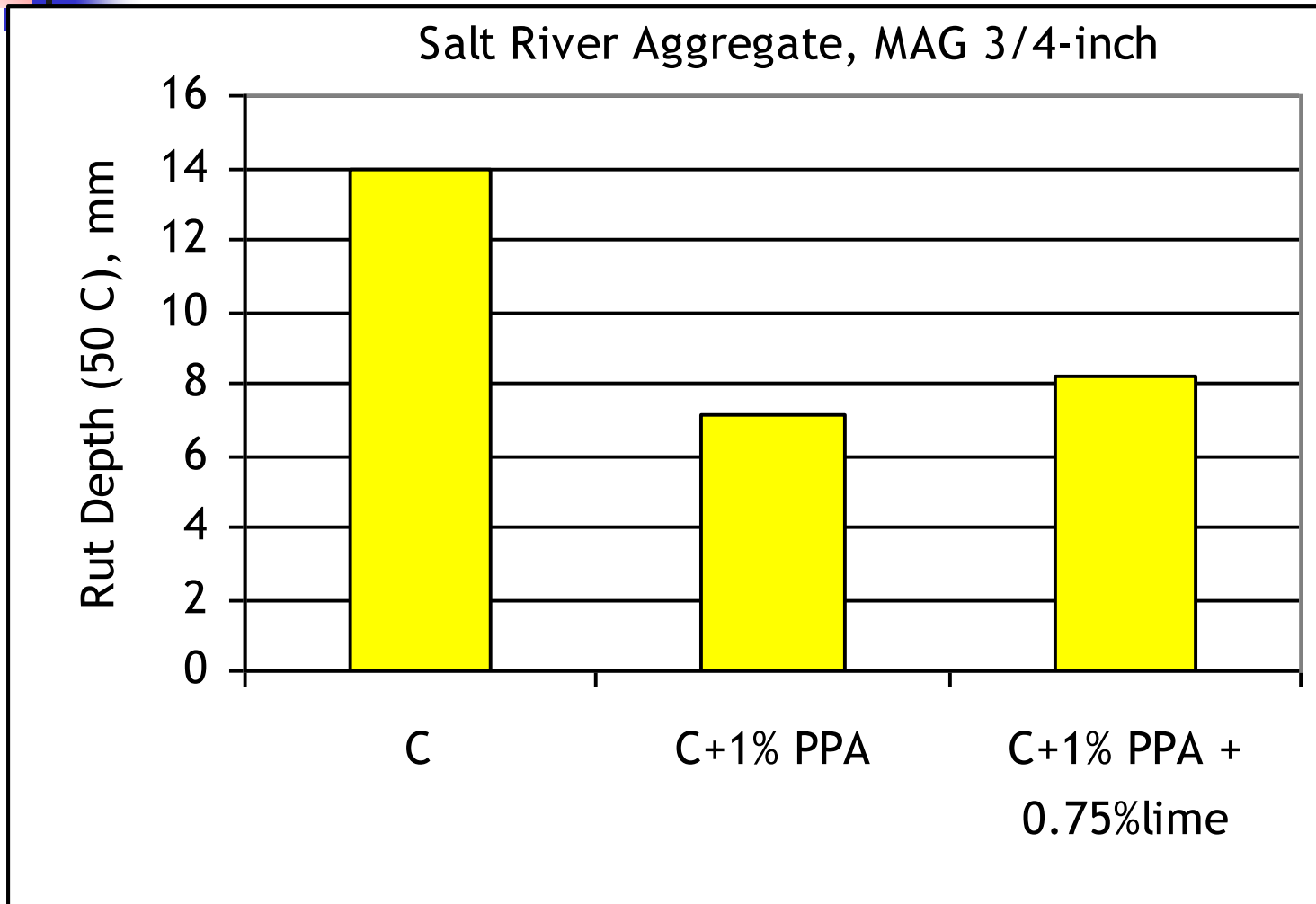


Log Temperature

# Effect of PPA on Performance Grade



# Effect of PPA on Rutting Susceptibility



# PPA Modified Asphalt



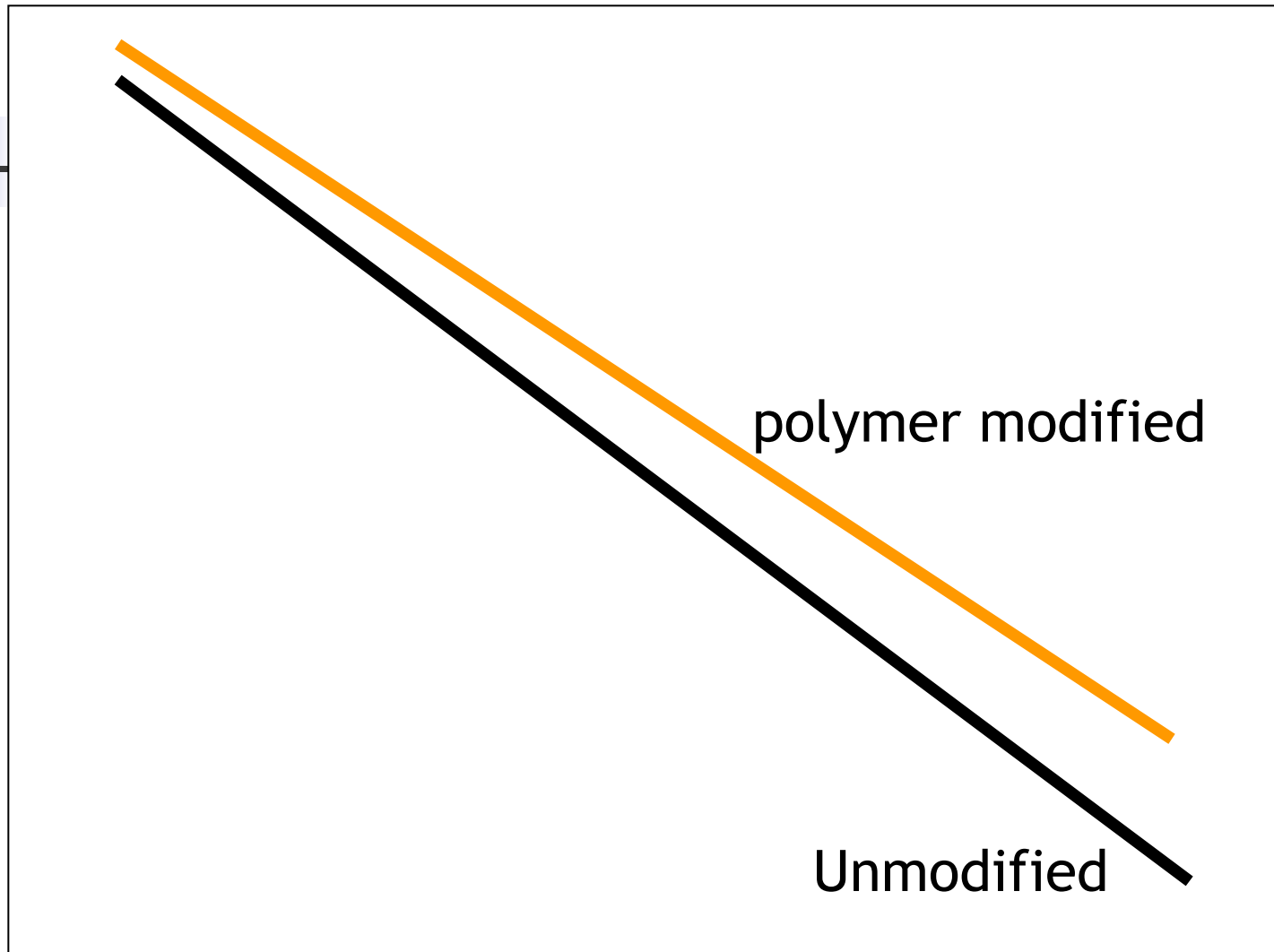
## ■ Advantages

- Easy to manufacture
- Stays homogeneous and heat stable
- No effect on low temp properties
- Relatively cheap increase in PG
- Stable supply
- Performance history
- Favorable co-modifier with polymers

## ■ Disadvantages

- Does not work with all asphalts
- Can be negated by basic highway chemicals
- No elastic effect as with stretchy types of polymers
- Cannot use for anionic emulsion bases

# Log Log Stiffness, Viscosity, etc.



Log Temperature



# Types of Polymers

---

- Elastic Type
  - SB diblock (Dynasol 1205)
  - SBS (Kraton D1184)
  - SBR latex (Ultrapave 1156)
  - Natural latex (Firestone Hartex 104)
  - Waste rubber (CRM WRF-14)
- Plastic Type
  - Honeywell Titan 7686
  - EVA (Exxon Polybilt 103)
  - polyethylene (Novaphalt)



# Polymer Modified Asphalt (Elastic)



## ■ Advantages

- Long performance history
- Elastic effect
- Improved cohesion
- Many specs designed around stretchy polymers (no mysteries)
- Favorable co-modifier with sulfur and PPA

## ■ Disadvantages

- Can be challenging to manufacture
- Compatibility can be a problem
- Tougher to handle
- Not heat stable
- Challenge to emulsify
- Relatively expensive

# Construction Enhancers



- Purpose

- reduce mix temperature
- facilitate compaction

- Examples

- warm mix chemicals (e.g., Evotherm, Rediset)
- mechanical production (e.g., zeolite, foaming)
- waxy additives (e.g., Sasobit, Honeywell Titan, EBS, Montan)



# Fillers

- Purpose
  - fill voids, lower asphalt content
- Examples
  - baghouse fines
  - crusher fines
  - lime and cement
  - fly ash
  - carbon black



# Fibers

- Purpose

- Increase tensile strength
- Inhibit draindown

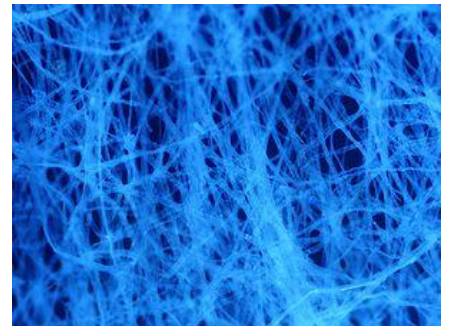
- Examples

- Natural

- Asbestos, rock wool

- Manufactured

- Polypropylene, polyester, fiberglass, cellulose



# Antistripping Agents

- Purpose
  - reduce moisture damage
  - stick asphalt to aggregate
- Lime and cement
- Amines
- Phosphate esters
- Organo silane
- Some polymers
  - SBR latex





# Hydrocarbons

---



- Purpose
  - soften asphalt
  - rejuvenate asphalt
  - stiffen asphalt
- Re-refined engine oil bottoms
- Rejuvenating agents (Raffex, Hydrolene)
- Gilsonite, petroleum pitch, TLA

# Extenders

- Purpose - reduce asphalt demand
- Examples
  - Sulfur (Shell Thiopave)
  - lignin





# Oxidants and Antioxidants

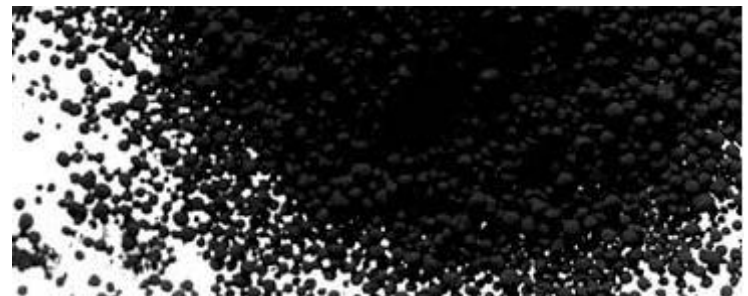


## ■ Oxidants

- Purpose - increase binder stiffness
- Example - manganese salts (aka Chemcrete, Resperion IntegraBase)

## ■ Antioxidants

- Purpose - increase durability by decreasing binder aging
- Example - carbon black, some lead compounds



# Waste Materials

- Purpose - replace asphalt binder or mix with cheaper waste product
- Examples
  - Scrap tires
  - Shingles (pre- and post-consumer)
  - “Glassphalt”
  - “Poticrete”





# What is Crumb Rubber Modified Asphalt

- Hold that thought until later!





# Popular Urban Legend



Chupacabra?

# Popular Urban Legend



- “I got this new stuff... you can use dirt in the mix...don’t have to compact mix...puts the “stickies” back in the asphalt...has better positioned carbonyl groups to favorably shift master curve...blah blah blah...”





If it doesn't  
make sense,  
it's probably  
not true.

- Judge Judy



# Thank You!

