



PHX Sky Train All Aboard!

**Arizona Pavement/Materials Conference
Nov 14, 2013**

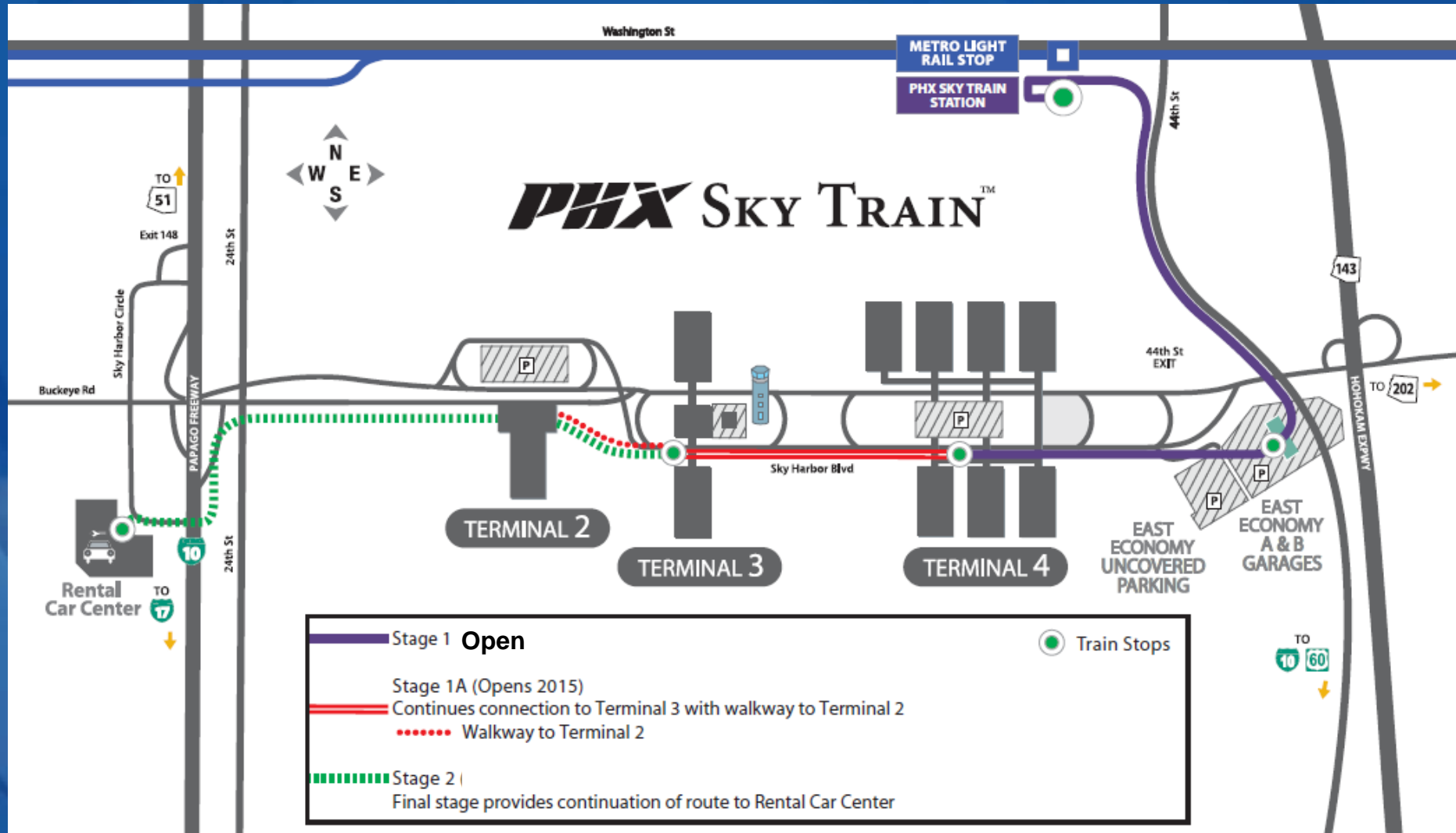
Steve Grubbs

Why Build the Train?

- Balanced Airport
- Clear Road Congestion
- Free -up Curb Space



Three Stages of Construction



Grand Opening April 8, 2013



OTUBOS!

Sky Train Vehicles (Driverless)

- **Description**

- Bombardier - Innovia APM 200 vehicles
- Quantity - 18 cars
- Weight – 32,000 pounds
- Capacity – 53 passengers
- Speed – Up to 38 mph

- **Vehicle Design Life**

- 25 years
- 2 million miles



PHX Sky Train Service Levels

- Hours of Operation
 - 24 / 7 / 365
- Travel Time
 - 5 minutes - 44th St. Station to Terminal 4
- Frequency / Headways
 - Train arrives at station every 3 – 4 minutes during normal hours
- Tremendous passenger flow capacity
 - 2, 3, or even 4 car train configurations to meet future demand



Train Stations

44th St. Station



East Economy Parking Station



Terminal 4 Station



Gold
LEED Certification

Services & Amenities: 44th St Station

- 24/7 Security
- Early Bag Check
- Boarding Pass Kiosks
- Drop-Off & Pickup Curb
- Cell Phone Lot
- Employee Parking
- Bike Racks & Lockers
- Short-Term Parking Meters
- METRO Ticket Machines
- Pet Area



44th St. Station



Bike Lockers

Bike Racks



Services & Amenities: EEL Station

- 24/7 Security
- Economy Parking
 - Garage
 - Surface
- Circulator Vehicle
- Early Bag Check
- Boarding Pass Kiosks
- Family Friendly Parking
- Close ADA Parking
- Pet area



Early Bag Check

- Serve 44th St. & EEL Stations
 - Since Train Opening
 - Over 70,000 bags checked
- ❖ Extend program to RCC and allow all airlines to participate



Bags



U.S. AIRWAYS

EEL Station Fun Facts

- EEL Concrete Cubic Yards: 3,375
- Total tonnage of structural steel: 165 tons

Train over Taxiway



Taxiway Romeo Fun Facts

- Taxiway R bridge is the only bridge in the world that carries a transit system over a Taxiway.
- About 70,000 cubic feet of concrete was used to build the bridge, which required delivery by nearly 300 concrete trucks.
- The columns on either side of the center span are 13' in diameter.
- The bridge has been compressed with 19 million pounds of post-tensioning force.
- The center span is 340' center-to-center of the piers.
- There are only 9 bridges in the State Bridge Inventory (of over 4700 bridges) with longer spans than the Taxiway R Bridge.

T-4 Station Fun Facts

- Station square footage: 48,900 Sq. Ft.
- The station contains over 3 million pounds of structural steel.
- The station is supported by steel girders weighing as much as 65,000 pounds each, which span over the S2 to S3 concourse connector bridge.
- The concrete foundations are 8 feet in diameter and extend 115 feet below the ground surface.

Performance Availability

- Monthly Availability Required = 99.5%
- System continues to meet performance availability requirements
- Availability to Date = 99.77%

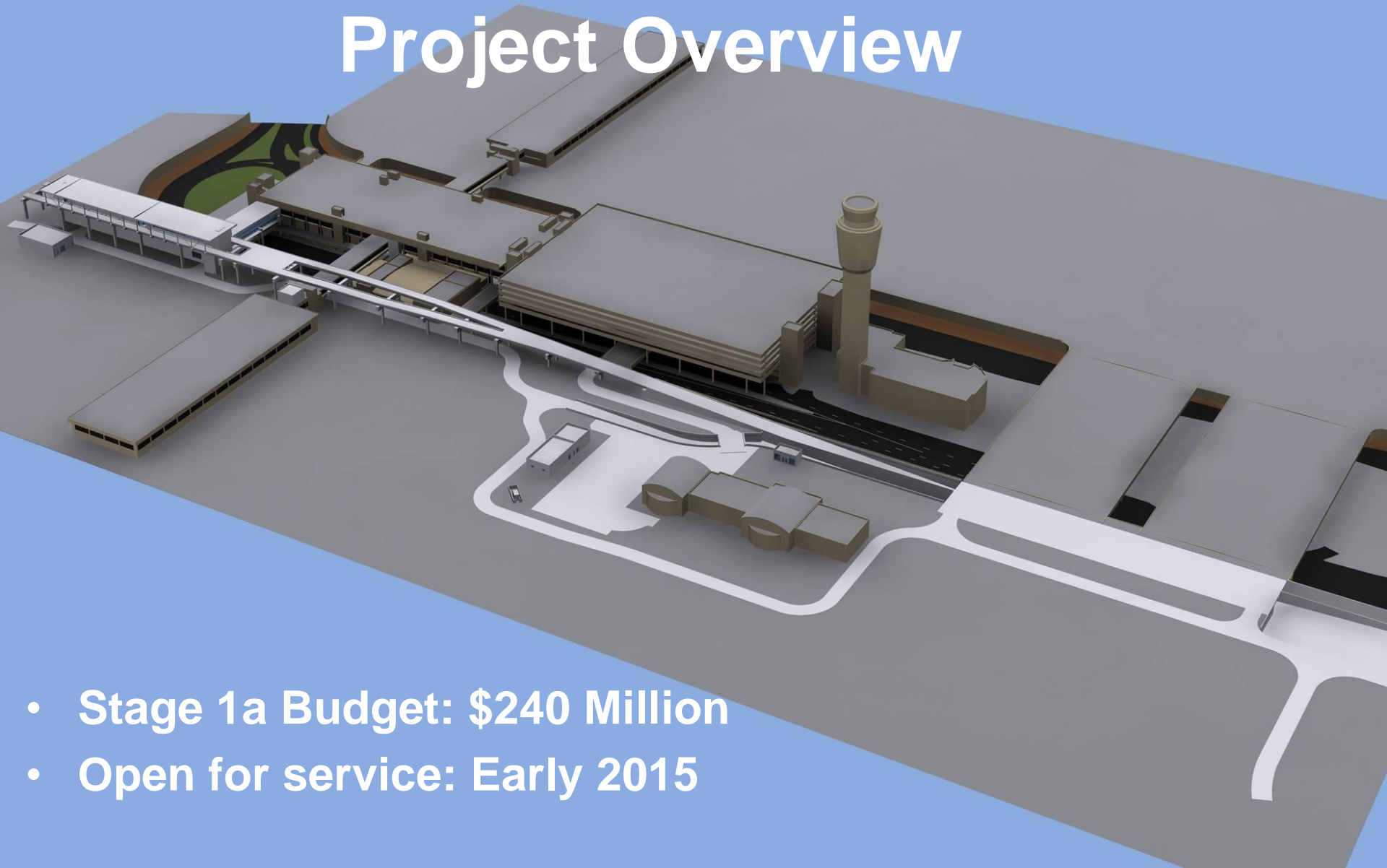


Ridership

- Averaging 300,000 passengers per month
- Over 2 Million passengers since opening
- Exceeds original forecast by 30%



PHX Sky Train Stage 1A Project Overview

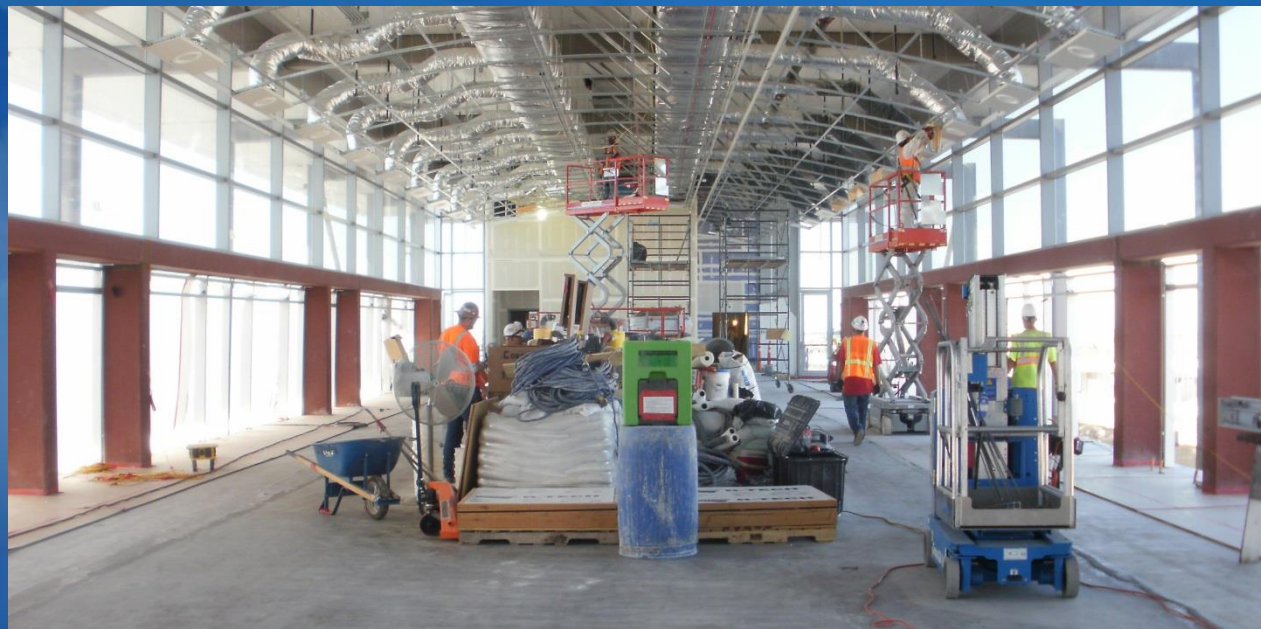


- Stage 1a Budget: \$240 Million
- Open for service: Early 2015

Next Stop Terminal 3 Station



Terminal 3 Station – Platform



PHX Sky Train Stage 1A



Terminal 3 Station – Pedestrian Bridge



PHX Sky Train Stage 1A



Elevated Guideway Section at Switch

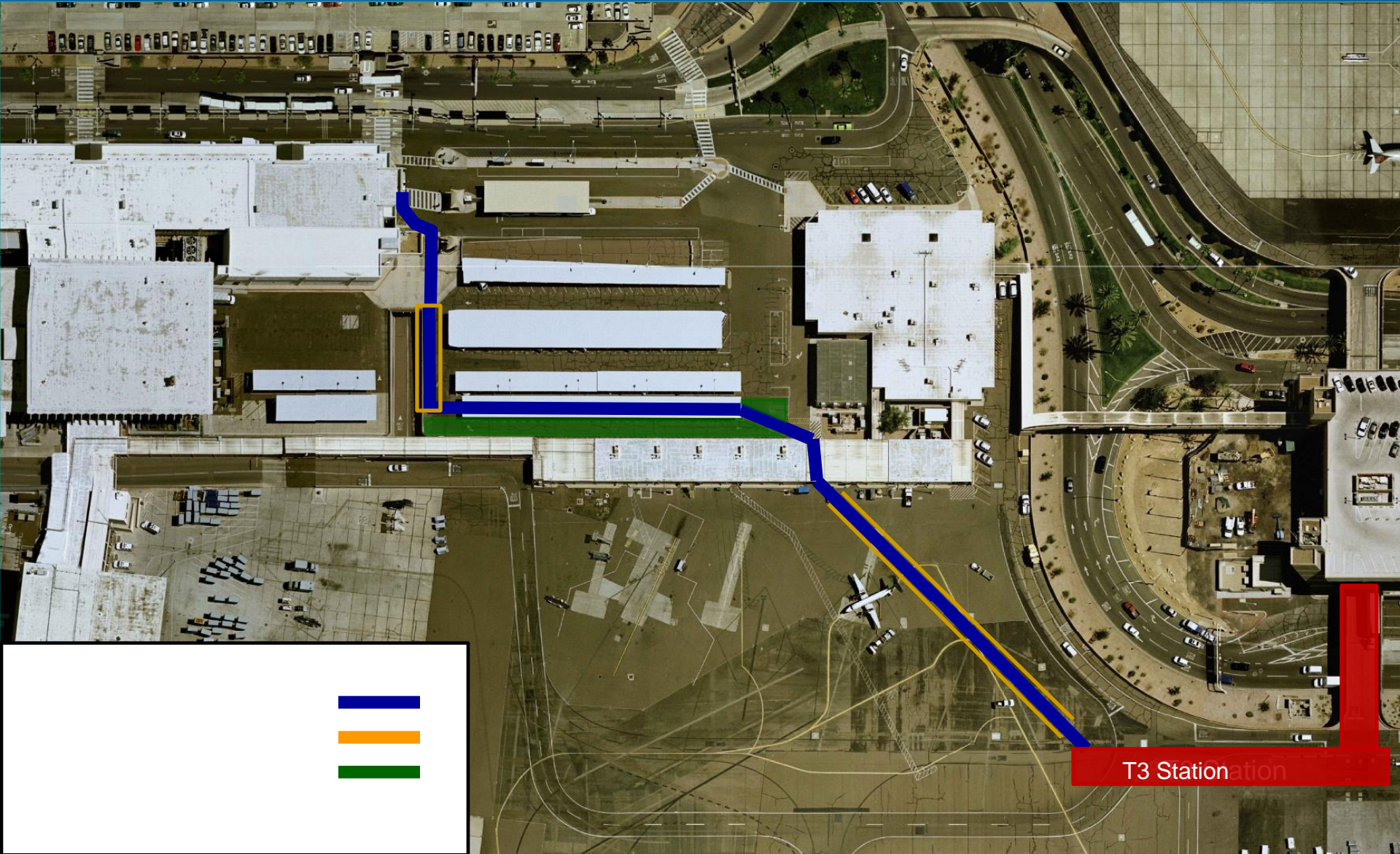
PHX Sky Train Stage 1A

Terminal 3 Modifications



PHX Sky Train Stage 1A

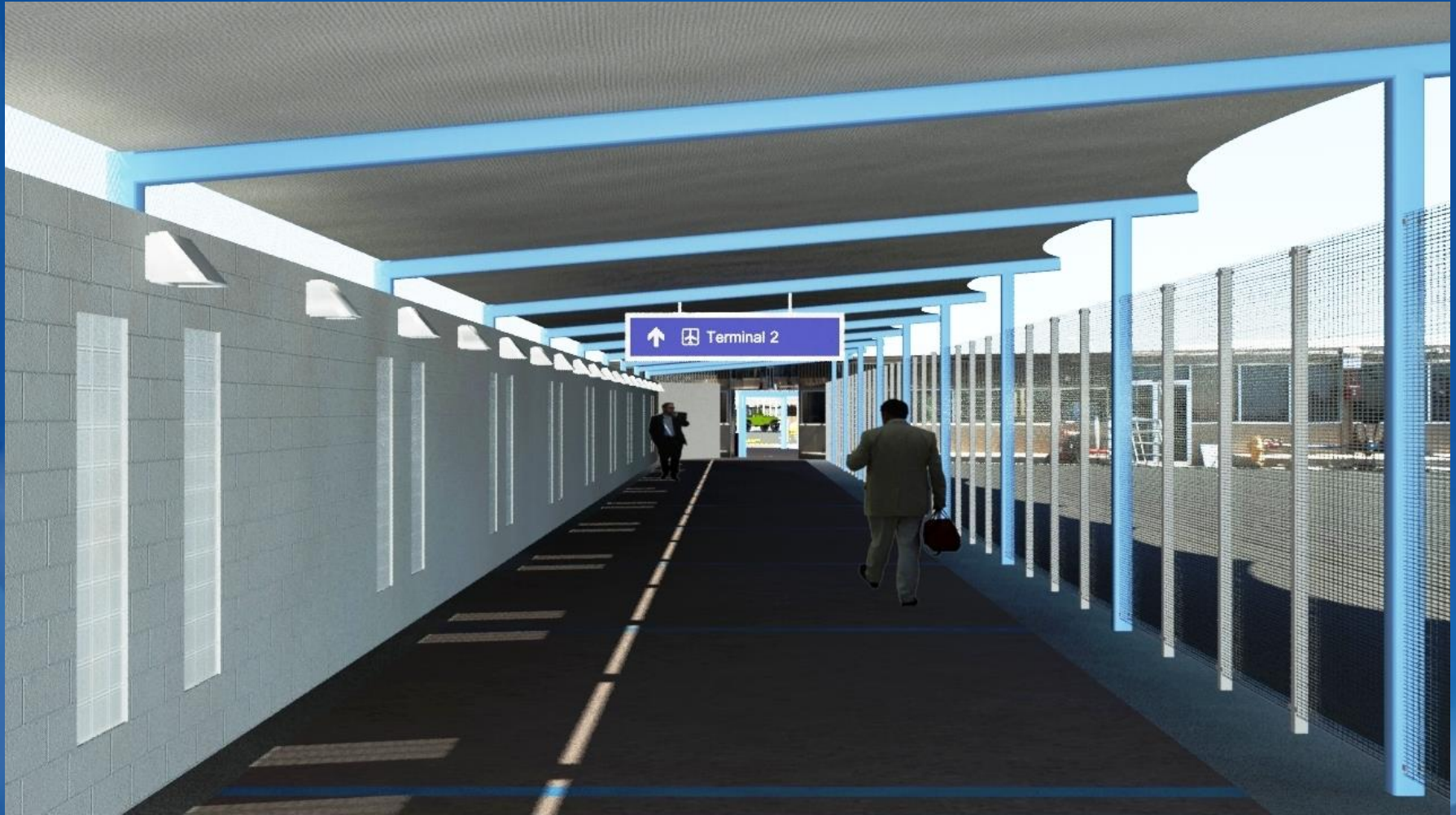
Terminal 2 Walkway Connection



T3 Station

PHX Sky Train Stage 1A

Terminal 2 Walkway Connection



Looking forward to seeing you on the
PHX Sky Train!

