

MAG Overview

2018 Pavements/ Material Conference

Staying Ahead of the Performance Curve



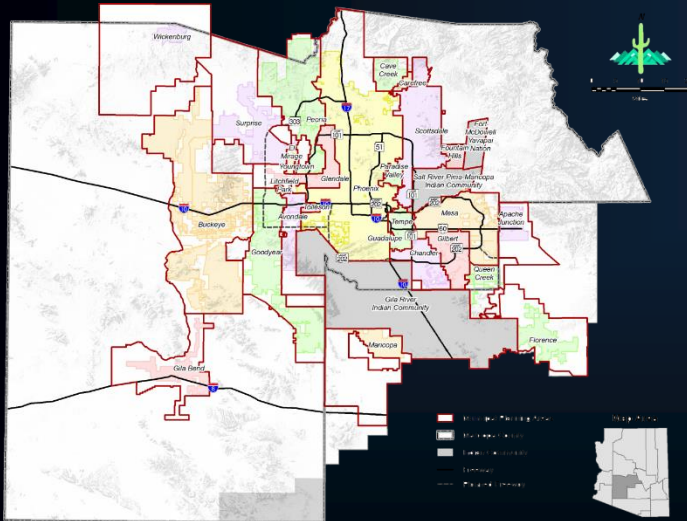
Forum for Regional Cooperation

- Metropolitan Planning Organization
- Council of Governments
- Lead Air Quality Planning Agency
- Founded in the spirit of cooperation



MAG Region

- 4.4 million people
- More than 10,000 square miles



Our Members

- 27 Cities & Towns
- 3 Native American Indian Communities
- 2 Counties
- ADOT



REGIONAL COUNCIL MEMBERS



Gail Barney, Chair
Mayor of Queen Creek



Lana Mook, Vice Chair
Mayor of El Mirage



Mark Mitchell, Treasurer
Mayor of Tempe



Robin Barker
Councilmember, Apache Junction



Kenneth Weise
Mayor of Avondale



Jackie Meck
Mayor of Buckeye



Les Peterson
Mayor of Carefree



David L. Smith
Councilmember, Cave Creek



Jay Tibshraeny
Mayor of Chandler



Tara Walter
Mayor of Florence



Pres. Bernadine Burnette
Fort McDowell Yavapai Nation



Nick DePorter
Councilmember, Fountain Hills



Tommy Sikes
Mayor of Gila Bend



Gov. Stephen Roe Lewis
Gila River Indian Community



Jenn Daniels
Mayor of Gilbert



Jerry Weiers
Mayor of Glendale



Georgia Lord
Mayor of Goodyear



Valerie Molina
Mayor of Guadalupe



Thomas Schoaf
Mayor of Litchfield Park



Christian Price
Mayor of Maricopa



Denny Barney
Supervisor, Maricopa County



John Giles
Mayor of Mesa



Michael Collins
Mayor of Paradise Valley



Cathy Carlat
Mayor of Peoria



Thelda Williams
Mayor of Phoenix



Todd House
Supervisor, Pinal County



President Delbert Ray
Salt River Pima-Maricopa I.C.

Sam Elters
State Transportation Board

Jack Sellers
State Transportation Board

W.J. "Jim" Lane
Mayor of Scottsdale

Sharon Wolcott
Mayor of Surprise

Anna Tovar
Mayor of Tolleson

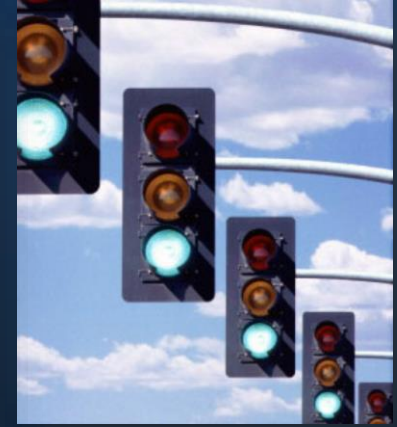
Everett Suckles
Mayor of Wickenburg

Michael LeVault
Mayor of Youngtown

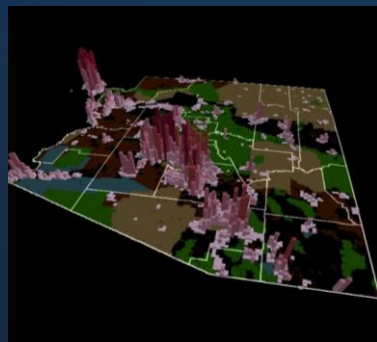


2018

Safe and Smart Travel



Link Between Transportation and Economic Development



Freeway Opening Dates

Freeway Opening Dates

This map shows the initial opening dates for segments of the regional freeway system. It also includes the planned opening dates for future freeways, including the South Mountain Loop 202 and the Loop 303 in the West Valley.

The map displays the Phoenix freeway network with segments color-coded by their opening year. Major highways shown include I-17, I-10, I-80, SR-51, SR-52, SR-53, SR-54, SR-55, SR-56, SR-57, SR-58, SR-59, SR-60, SR-61, SR-62, SR-63, SR-64, SR-65, SR-66, SR-67, SR-68, SR-69, SR-70, SR-71, SR-72, SR-73, SR-74, SR-75, SR-76, SR-77, SR-78, SR-79, SR-80, SR-81, SR-82, SR-83, SR-84, SR-85, SR-86, SR-87, SR-88, SR-89, SR-90, SR-91, SR-92, SR-93, SR-94, SR-95, SR-96, SR-97, SR-98, SR-99, SR-100, SR-101, SR-102, SR-103, SR-104, SR-105, SR-106, SR-107, SR-108, SR-109, SR-110, SR-111, SR-112, SR-113, SR-114, SR-115, SR-116, SR-117, SR-118, SR-119, SR-120, SR-121, SR-122, SR-123, SR-124, SR-125, SR-126, SR-127, SR-128, SR-129, SR-130, SR-131, SR-132, SR-133, SR-134, SR-135, SR-136, SR-137, SR-138, SR-139, SR-140, SR-141, SR-142, SR-143, SR-144, SR-145, SR-146, SR-147, SR-148, SR-149, SR-150, SR-151, SR-152, SR-153, SR-154, SR-155, SR-156, SR-157, SR-158, SR-159, SR-160, SR-161, SR-162, SR-163, SR-164, SR-165, SR-166, SR-167, SR-168, SR-169, SR-170, SR-171, SR-172, SR-173, SR-174, SR-175, SR-176, SR-177, SR-178, SR-179, SR-180, SR-181, SR-182, SR-183, SR-184, SR-185, SR-186, SR-187, SR-188, SR-189, SR-190, SR-191, SR-192, SR-193, SR-194, SR-195, SR-196, SR-197, SR-198, SR-199, SR-200, SR-201, SR-202, SR-203, SR-204, SR-205, SR-206, SR-207, SR-208, SR-209, SR-210, SR-211, SR-212, SR-213, SR-214, SR-215, SR-216, SR-217, SR-218, SR-219, SR-220, SR-221, SR-222, SR-223, SR-224, SR-225, SR-226, SR-227, SR-228, SR-229, SR-230, SR-231, SR-232, SR-233, SR-234, SR-235, SR-236, SR-237, SR-238, SR-239, SR-240, SR-241, SR-242, SR-243, SR-244, SR-245, SR-246, SR-247, SR-248, SR-249, SR-250, SR-251, SR-252, SR-253, SR-254, SR-255, SR-256, SR-257, SR-258, SR-259, SR-260, SR-261, SR-262, SR-263, SR-264, SR-265, SR-266, SR-267, SR-268, SR-269, SR-270, SR-271, SR-272, SR-273, SR-274, SR-275, SR-276, SR-277, SR-278, SR-279, SR-280, SR-281, SR-282, SR-283, SR-284, SR-285, SR-286, SR-287, SR-288, SR-289, SR-290, SR-291, SR-292, SR-293, SR-294, SR-295, SR-296, SR-297, SR-298, SR-299, SR-300, SR-301, SR-302, SR-303, SR-304, SR-305, SR-306, SR-307, SR-308, SR-309, SR-310, SR-311, SR-312, SR-313, SR-314, SR-315, SR-316, SR-317, SR-318, SR-319, SR-320, SR-321, SR-322, SR-323, SR-324, SR-325, SR-326, SR-327, SR-328, SR-329, SR-330, SR-331, SR-332, SR-333, SR-334, SR-335, SR-336, SR-337, SR-338, SR-339, SR-340, SR-341, SR-342, SR-343, SR-344, SR-345, SR-346, SR-347, SR-348, SR-349, SR-350, SR-351, SR-352, SR-353, SR-354, SR-355, SR-356, SR-357, SR-358, SR-359, SR-360, SR-361, SR-362, SR-363, SR-364, SR-365, SR-366, SR-367, SR-368, SR-369, SR-370, SR-371, SR-372, SR-373, SR-374, SR-375, SR-376, SR-377, SR-378, SR-379, SR-380, SR-381, SR-382, SR-383, SR-384, SR-385, SR-386, SR-387, SR-388, SR-389, SR-390, SR-391, SR-392, SR-393, SR-394, SR-395, SR-396, SR-397, SR-398, SR-399, SR-400, SR-401, SR-402, SR-403, SR-404, SR-405, SR-406, SR-407, SR-408, SR-409, SR-410, SR-411, SR-412, SR-413, SR-414, SR-415, SR-416, SR-417, SR-418, SR-419, SR-420, SR-421, SR-422, SR-423, SR-424, SR-425, SR-426, SR-427, SR-428, SR-429, SR-430, SR-431, SR-432, SR-433, SR-434, SR-435, SR-436, SR-437, SR-438, SR-439, SR-440, SR-441, SR-442, SR-443, SR-444, SR-445, SR-446, SR-447, SR-448, SR-449, SR-450, SR-451, SR-452, SR-453, SR-454, SR-455, SR-456, SR-457, SR-458, SR-459, SR-460, SR-461, SR-462, SR-463, SR-464, SR-465, SR-466, SR-467, SR-468, SR-469, SR-470, SR-471, SR-472, SR-473, SR-474, SR-475, SR-476, SR-477, SR-478, SR-479, SR-480, SR-481, SR-482, SR-483, SR-484, SR-485, SR-486, SR-487, SR-488, SR-489, SR-490, SR-491, SR-492, SR-493, SR-494, SR-495, SR-496, SR-497, SR-498, SR-499, SR-500, SR-501, SR-502, SR-503, SR-504, SR-505, SR-506, SR-507, SR-508, SR-509, SR-510, SR-511, SR-512, SR-513, SR-514, SR-515, SR-516, SR-517, SR-518, SR-519, SR-520, SR-521, SR-522, SR-523, SR-524, SR-525, SR-526, SR-527, SR-528, SR-529, SR-530, SR-531, SR-532, SR-533, SR-534, SR-535, SR-536, SR-537, SR-538, SR-539, SR-540, SR-541, SR-542, SR-543, SR-544, SR-545, SR-546, SR-547, SR-548, SR-549, SR-550, SR-551, SR-552, SR-553, SR-554, SR-555, SR-556, SR-557, SR-558, SR-559, SR-560, SR-561, SR-562, SR-563, SR-564, SR-565, SR-566, SR-567, SR-568, SR-569, SR-570, SR-571, SR-572, SR-573, SR-574, SR-575, SR-576, SR-577, SR-578, SR-579, SR-580, SR-581, SR-582, SR-583, SR-584, SR-585, SR-586, SR-587, SR-588, SR-589, SR-590, SR-591, SR-592, SR-593, SR-594, SR-595, SR-596, SR-597, SR-598, SR-599, SR-600, SR-601, SR-602, SR-603, SR-604, SR-605, SR-606, SR-607, SR-608, SR-609, SR-610, SR-611, SR-612, SR-613, SR-614, SR-615, SR-616, SR-617, SR-618, SR-619, SR-620, SR-621, SR-622, SR-623, SR-624, SR-625, SR-626, SR-627, SR-628, SR-629, SR-630, SR-631, SR-632, SR-633, SR-634, SR-635, SR-636, SR-637, SR-638, SR-639, SR-640, SR-641, SR-642, SR-643, SR-644, SR-645, SR-646, SR-647, SR-648, SR-649, SR-650, SR-651, SR-652, SR-653, SR-654, SR-655, SR-656, SR-657, SR-658, SR-659, SR-660, SR-661, SR-662, SR-663, SR-664, SR-665, SR-666, SR-667, SR-668, SR-669, SR-670, SR-671, SR-672, SR-673, SR-674, SR-675, SR-676, SR-677, SR-678, SR-679, SR-680, SR-681, SR-682, SR-683, SR-684, SR-685, SR-686, SR-687, SR-688, SR-689, SR-690, SR-691, SR-692, SR-693, SR-694, SR-695, SR-696, SR-697, SR-698, SR-699, SR-700, SR-701, SR-702, SR-703, SR-704, SR-705, SR-706, SR-707, SR-708, SR-709, SR-710, SR-711, SR-712, SR-713, SR-714, SR-715, SR-716, SR-717, SR-718, SR-719, SR-720, SR-721, SR-722, SR



Interchange Projects

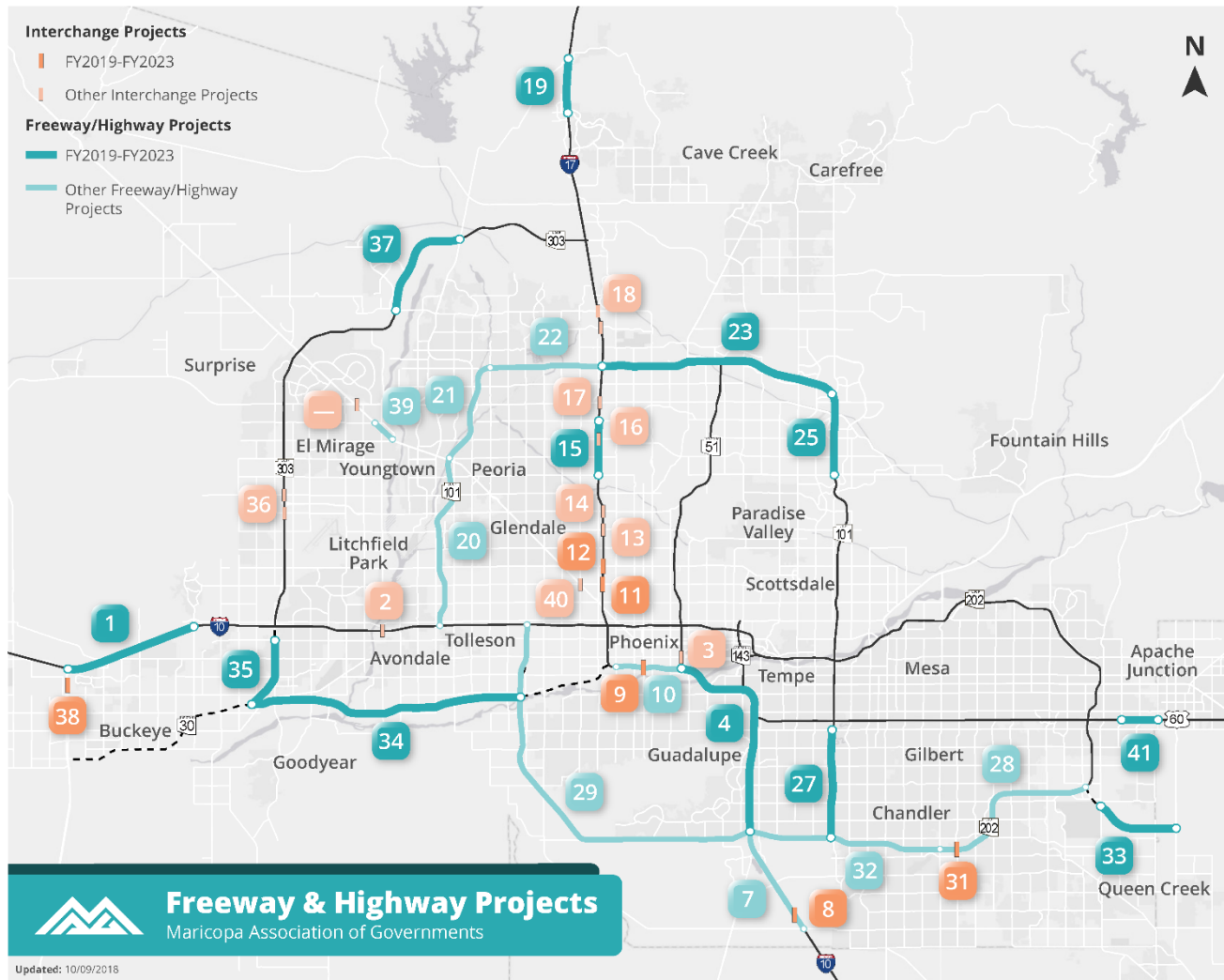
| FY2019-FY2023

| Other Interchange Projects

Freeway/Highway Projects

— FY2019-FY2023

— Other Freeway/Highway Projects



ID Project Location

- 1 I-10, SR-85 to Verrado Way
- 2 I-10/Fairway Dr
- 3 I-10/Sky Harbor West Airport Access
- 4 I-10, I-17 Split to SR-202L
- 7 I-10, SR-202L to Riggs Rd
- 8 I-10/Chandler Heights Rd
- 9 I-17/Central Ave Bridge
- 10 I-17, I-10 Split to 19th Ave
- 11 I-17/Indian School Road
- 12 I-17/Camelback Road
- 13 I-17/Glendale Avenue
- 14 I-17/Northern Avenue
- 15 I-17, Peoria Avenue to Greenway Road
- 16 I-17/Thunderbird Avenue
- 17 I-17/Bell Road
- 18 I-17/Happy Valley Rd and I-17/Pinnacle Peak
- 19 I-17, Anthem Way to Yavapai County Line
- 20 SR-101L, I-10 to US-60
- 21 SR-101L, US-60 to 75th Avenue
- 22 SR-101L, 75th Avenue to I-17
- 23 SR-101L, I-17 to Pima Road
- 25 SR-101L, Pima Road to Shea Boulevard
- 26 SR-101L Pima Road Extension (JPA)
(NOT ON MAP)
- 27 SR-101L, Baseline Road to SR-202L
- 28 SR-202L, Broadway Road to Gilbert Road
- 29 SR-202L (South Mountain); I-10 (Maricopa) - I-10 (Papago) Maintenance
- 31 SR-202L/Lindsay Road
- 32 SR-202, Gilbert Road to I-10
- 33 SR-24, Ellsworth Road to Ironwood Road
- 34 SR-30, SR-303L to SR-202L
- 35 SR-303L, MC-85 to Van Buren Street
- 36 SR-303L, Northern Avenue to Olive Avenue
- 37 SR-303L, Happy Valley Parkway to Lake Pleasant Parkway
- 38 SR-85/Warner Street Bridge
- 39 US-60, Greenway Road - Thompson Ranch Road
- 40 US-60/35th Avenue/Indian School Road
- US-60/Bell Road
- 41 US-60, Crismon Road to Meridian Road



Freeway & Highway Projects

Maricopa Association of Governments

Updated: 10/09/2018

Targeted Opening – 2020

Happy Valley Road



Pinnacle Peak Road



Thanks to ADOT for the field trip!

Loop 101, Pima Freeway I-17 to Princess Drive

Construction Start – March 2019



Construction Start – April 2020

I-10: SR-85 to Verrado Way



Loop 101 Price Freeway Baseline Road to Santan Freeway

Construction Start – June 2019

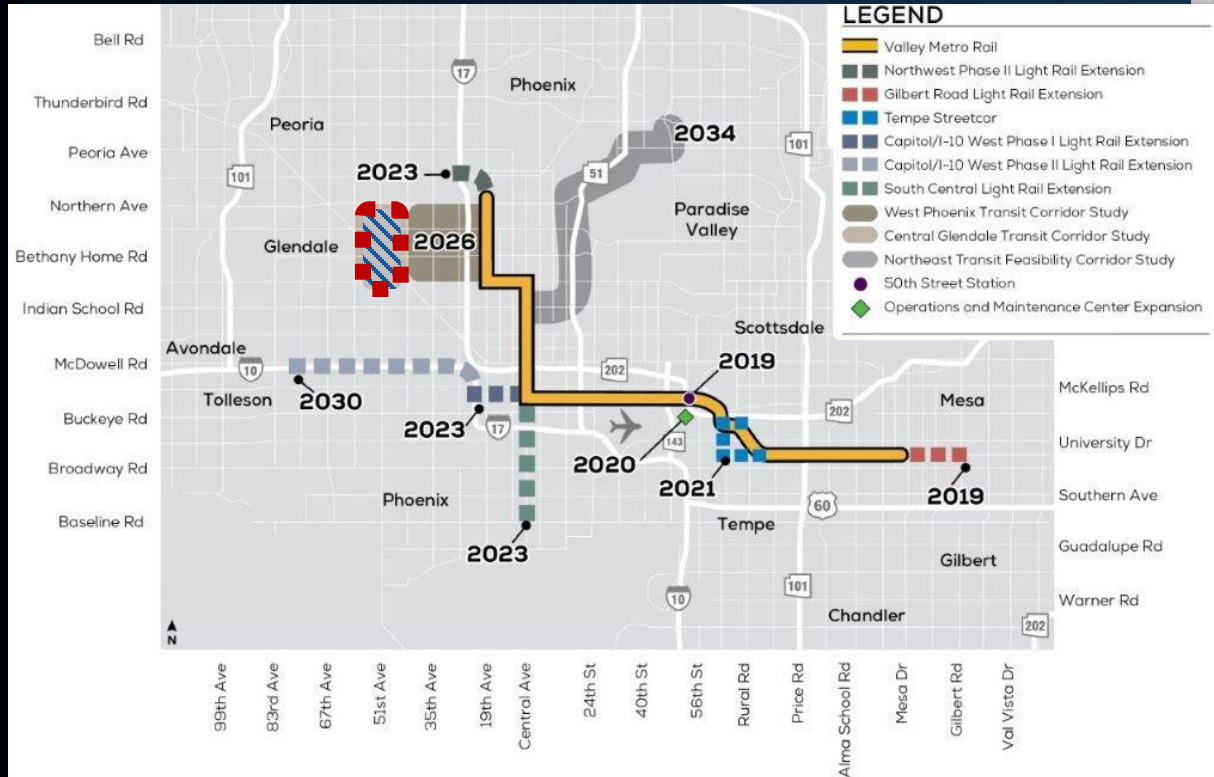


Construction Start – August 2021

I-10: Split to Santan Freeway



Light Rail Expansion



Arterial Streets

- New and Improved Streets
- Repair & Rehabilitation
- Pavement Preservation

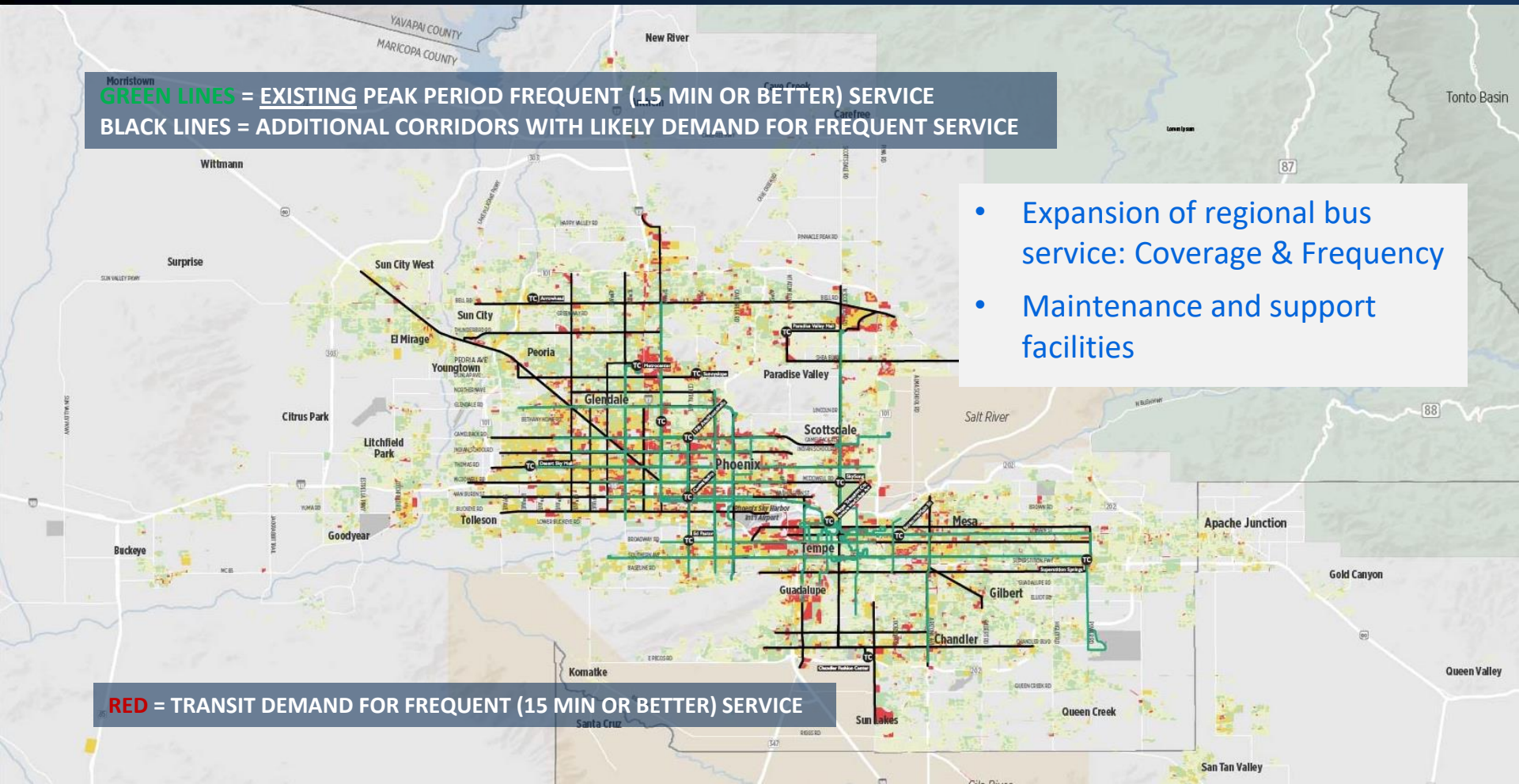


2015 Corridors w/ Demand vs Existing Frequent

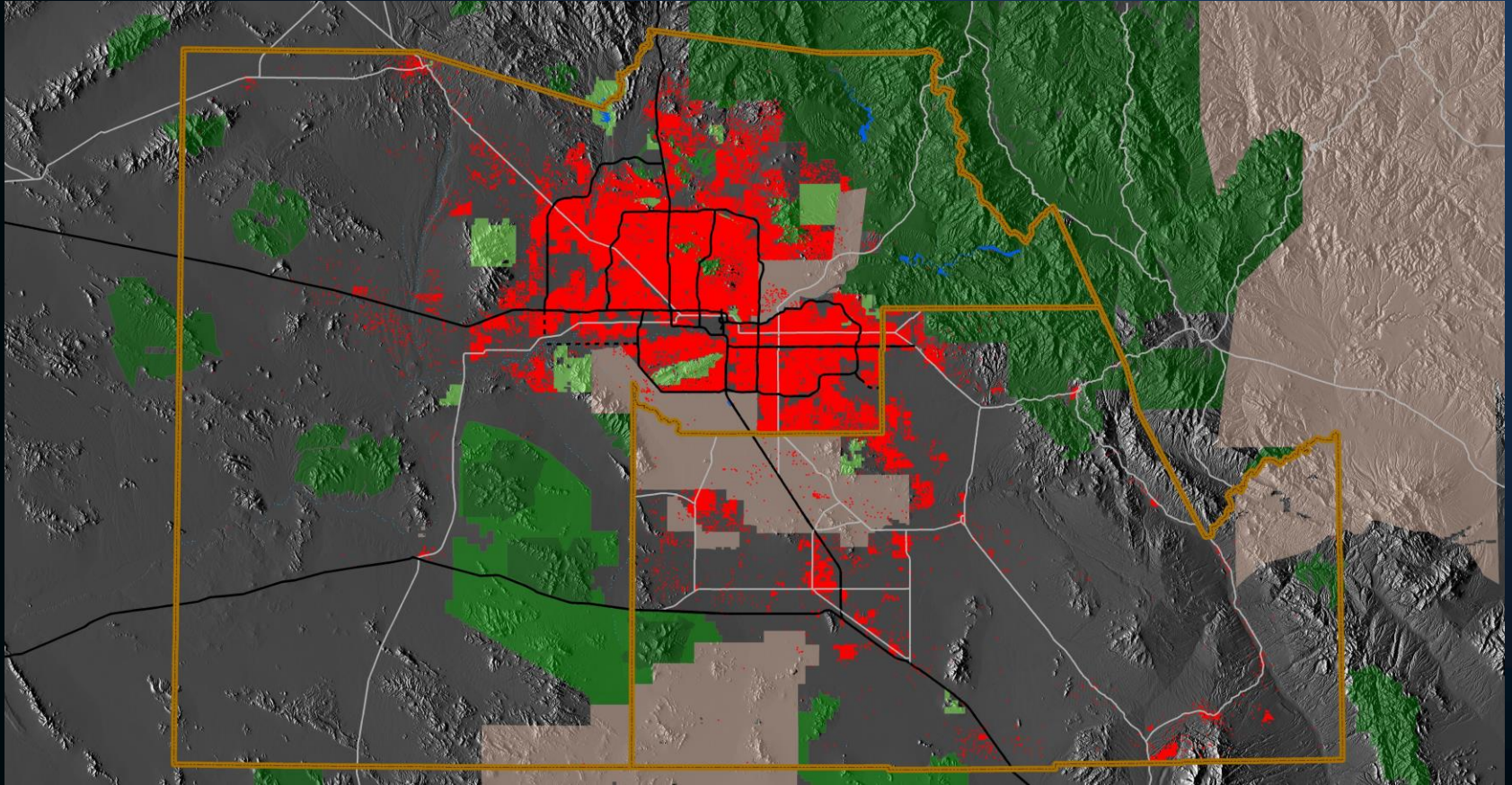
GREEN LINES = EXISTING PEAK PERIOD FREQUENT (15 MIN OR BETTER) SERVICE
BLACK LINES = ADDITIONAL CORRIDORS WITH LIKELY DEMAND FOR FREQUENT SERVICE

- Expansion of regional bus service: Coverage & Frequency
- Maintenance and support facilities

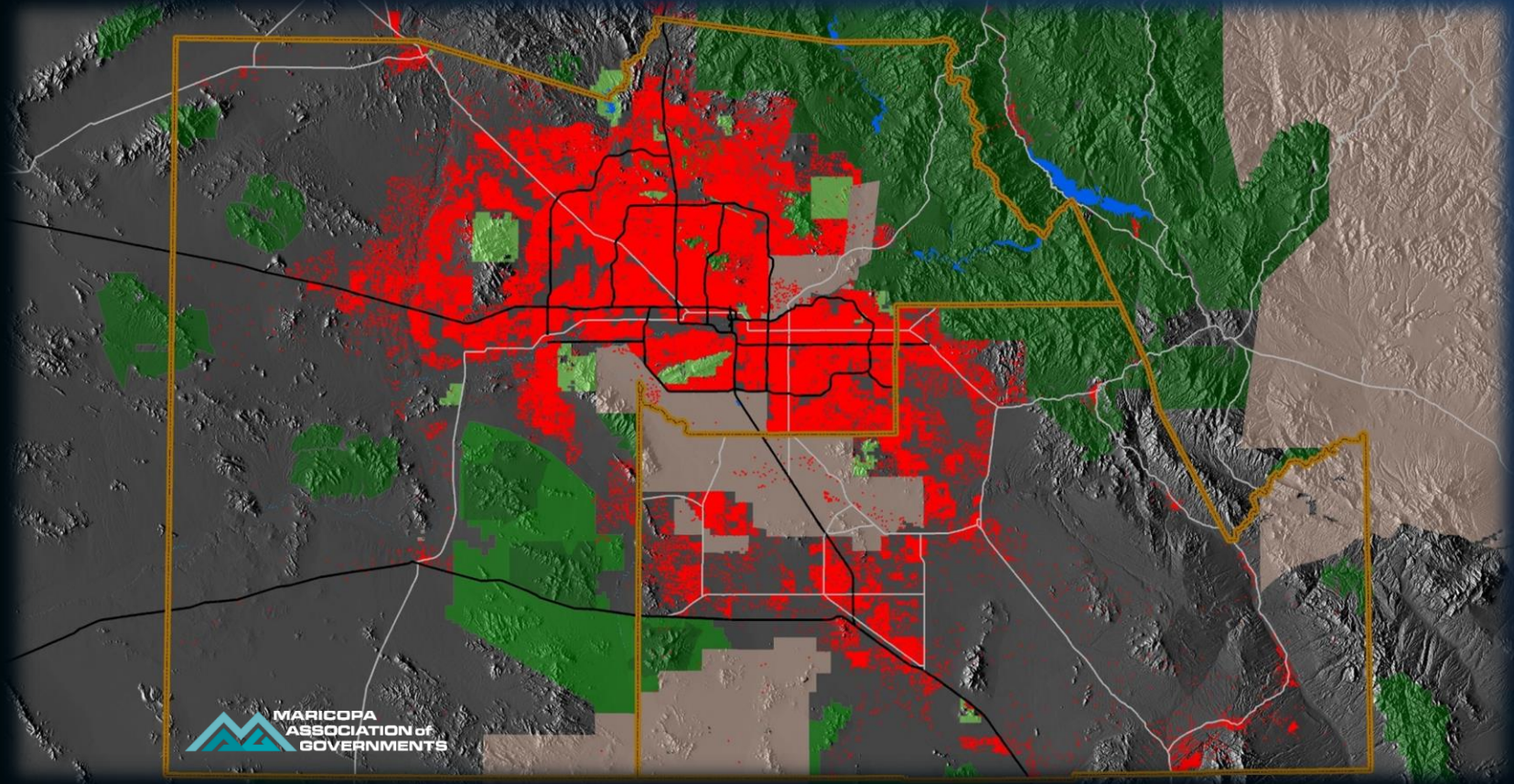
RED = TRANSIT DEMAND FOR FREQUENT (15 MIN OR BETTER) SERVICE

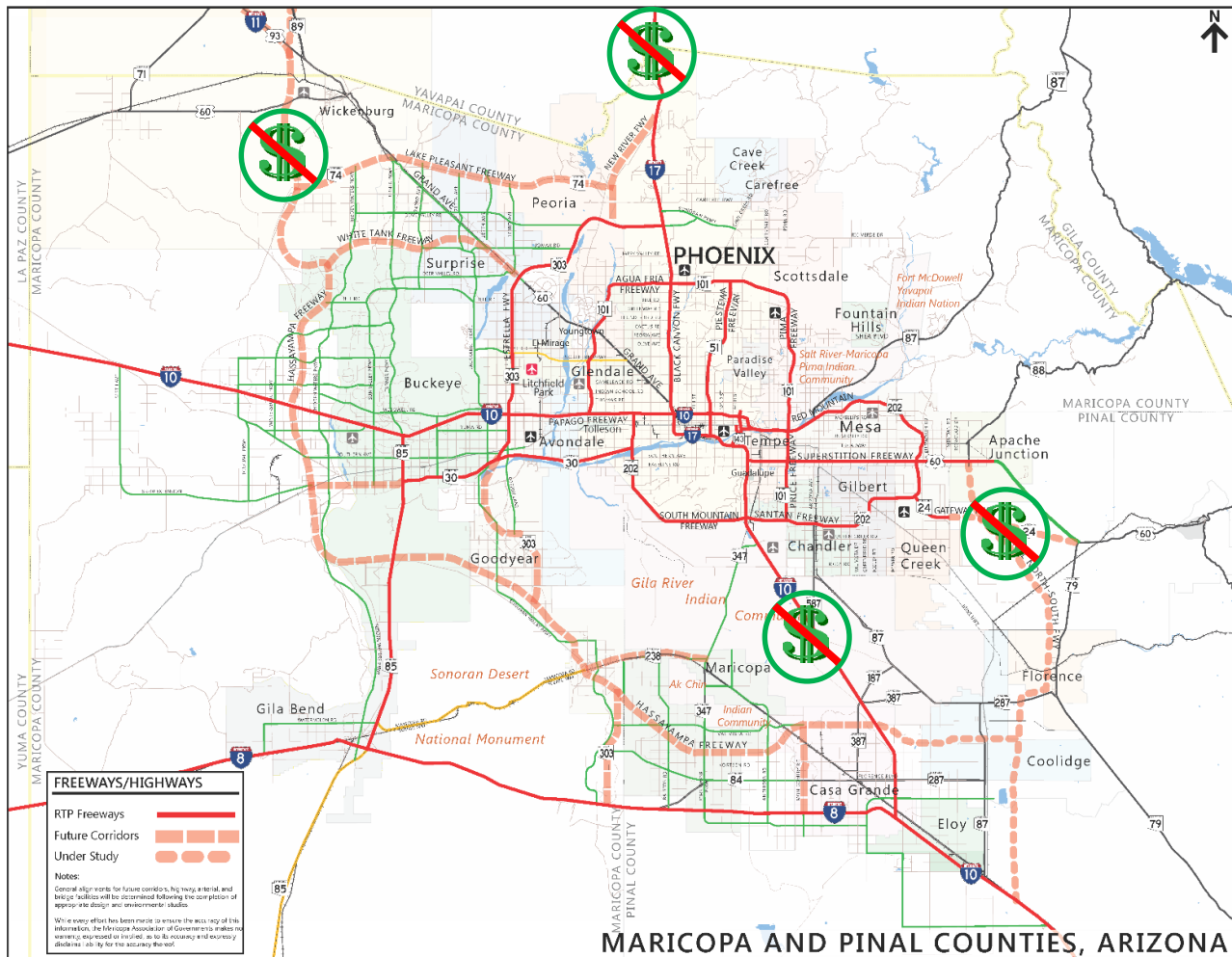


2020 – Population 4,925,000

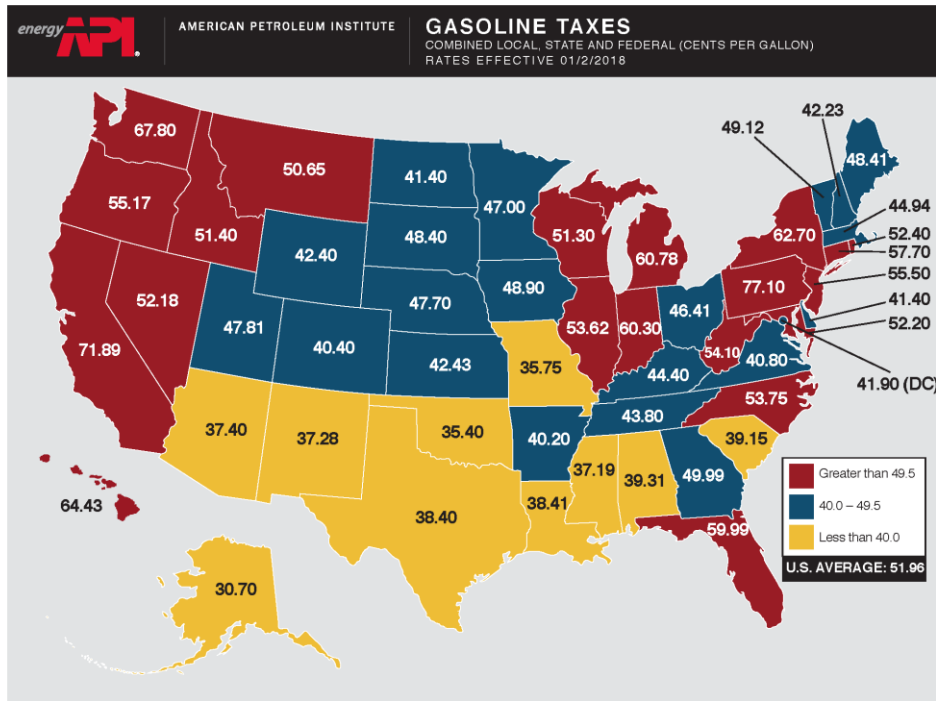


2050 – Population 7,514,000





Arizona 14.5 cents less than average

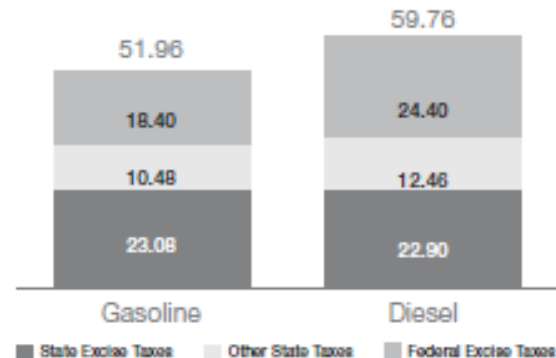


Disclaimer: This report is posted for informational purposes only and should not be relied upon or used for compliance purposes.

\$426.9 million added revenue if
Arizona @ U.S. average

National Average

(cents per gallon)



So what does the Arizona Gas Tax & Starbucks have in common?



Coffee & Croissant

\$6.60 (plus tax)

Paying 14.5 cents more per
gallon

\$6.50 PER MONTH





For More Information Contact:

Eric Anderson
MAG Executive Director
Eanderson@azmag.gov
(602) 254-6300
www.azmag.gov

